

CABIN1 Antibody

Catalog No: #46380

Orders: order@signalwayantibody.comSupport: tech@signalwayantibody.com

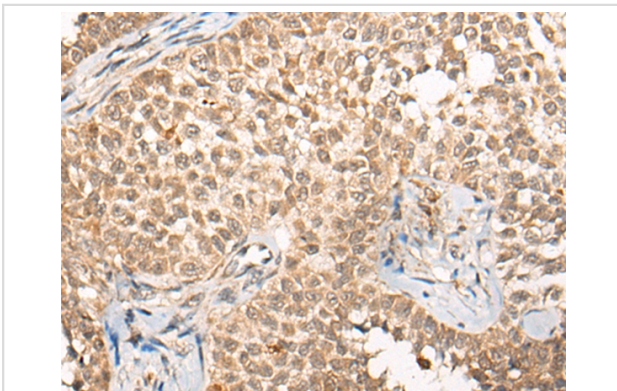
Description

Product Name	CABIN1 Antibody
Host Species	Rabbit
Clonality	Polyclonal
Purification	Antigen affinity purification
Applications	IHC
Species Reactivity	Hu
Specificity	The antibody detects endogenous levels of total CABIN1 protein.
Immunogen Type	peptide
Immunogen Description	Synthetic peptide corresponding to internal residues of human CABIN1
Target Name	CABIN1
Other Names	CAIN; PPP3IN; KB-318B8.7
Accession No.	Swiss-Prot:Q9Y6J0 NCBI Gene ID:23523NCBI Protein:NP_036427
Uniprot	Q9Y6J0
GeneID	23523;
Concentration	1.3mg/ml
Formulation	Rabbit IgG in pH7.4 PBS, 0.05% NaN ₃ , 40% Glycerol.
Storage	Store at -20°C

Application Details

Immunohistochemistry: 1: 40-200

Images



The image on the left is immunohistochemistry of paraffin-embedded Human ovarian cancer tissue using 46380(CABIN1 Antibody) at dilution 1/50, on the right is treated with synthetic peptide. (Original magnification: x200)

Background

Calcineurin plays an important role in the T-cell receptor-mediated signal transduction pathway. The protein encoded by this gene binds specifically to the activated form of calcineurin and inhibits calcineurin-mediated signal transduction. The encoded protein is found in the nucleus and contains a leucine zipper domain as well as several PEST motifs, sequences which confer targeted degradation to those proteins which contain them. Alternative splicing results in multiple transcript variants encoding two different isoforms.

Note: This product is for in vitro research use only