

CAMK2A Antibody

Catalog No: #46394

Orders: order@signalwayantibody.comSupport: tech@signalwayantibody.com

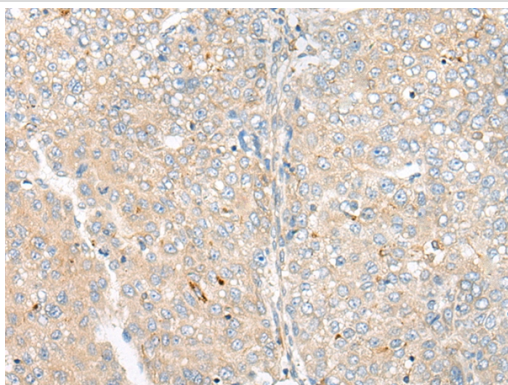
Description

Product Name	CAMK2A Antibody
Host Species	Rabbit
Clonality	Polyclonal
Purification	Antigen affinity purification
Applications	IHC
Species Reactivity	Hu Ms Rt
Specificity	The antibody detects endogenous levels of total CAMK2A protein.
Immunogen Type	peptide
Immunogen Description	Synthetic peptide corresponding to residues near the C terminal of human CAMK2A
Target Name	CAMK2A
Other Names	CAMKA
Accession No.	Swiss-Prot:Q9UQM7 NCBI Gene ID:815NCBI Protein:NP_741960
Uniprot	Q9UQM7
GeneID	815;
Concentration	1.4mg/ml
Formulation	Rabbit IgG in pH7.4 PBS, 0.05% NaN ₃ , 40% Glycerol.
Storage	Store at -20°C

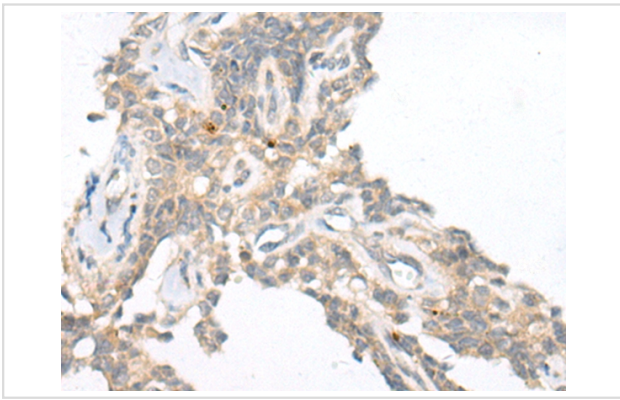
Application Details

Immunohistochemistry: 1: 40-200

Images



The image on the left is immunohistochemistry of paraffin-embedded Human liver cancer tissue using 46394(CAMK2A Antibody) at dilution 1/55, on the right is treated with synthetic peptide. (Original magnification: x200)



The image on the left is immunohistochemistry of paraffin-embedded Human ovarian cancer tissue using 46394(CAMK2A Antibody) at dilution 1/55, on the right is treated with synthetic peptide. (Original magnification: x200)

Background

The product of this gene belongs to the serine/threonine protein kinases family, and to the Ca^{2+} /calmodulin-dependent protein kinases subfamily. Calcium signaling is crucial for several aspects of plasticity at glutamatergic synapses. This calcium calmodulin-dependent protein kinase is composed of four different chains: alpha, beta, gamma, and delta. The alpha chain encoded by this gene is required for hippocampal long-term potentiation (LTP) and spatial learning. In addition to its calcium-calmodulin (CaM)-dependent activity, this protein can undergo autophosphorylation, resulting in CaM-independent activity. Two transcript variants encoding distinct isoforms have been identified for this gene.?

Note: This product is for in vitro research use only