

## CAPN15 Antibody

Catalog No: #46399

Orders: [order@signalwayantibody.com](mailto:order@signalwayantibody.com)Support: [tech@signalwayantibody.com](mailto:tech@signalwayantibody.com)

## Description

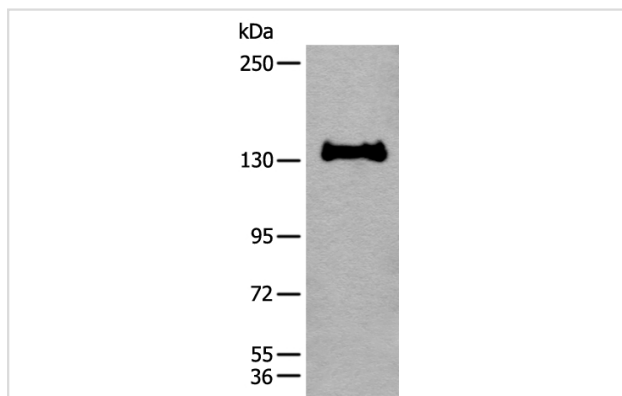
Product Name	CAPN15 Antibody
Host Species	Rabbit
Clonality	Polyclonal
Purification	Antigen affinity purification
Applications	WB IHC
Species Reactivity	Hu
Specificity	The antibody detects endogenous levels of total CAPN15 protein.
Immunogen Type	peptide
Immunogen Description	Synthetic peptide corresponding to residues near the N terminal of human CAPN15
Target Name	CAPN15
Other Names	SOLH
Accession No.	Swiss-Prot:O75808NCBI Gene ID:6650NCBI Protein:NP_005623
Uniprot	O75808
GeneID	6650;
Calculated MW	117 kDa
Concentration	1.3mg/ml
Formulation	Rabbit IgG in pH7.4 PBS, 0.05% NaN <sub>3</sub> , 40% Glycerol.
Storage	Store at -20°C

## Application Details

Western blotting: 1:500-1:2000

Immunohistochemistry: 1: 40-200

## Images

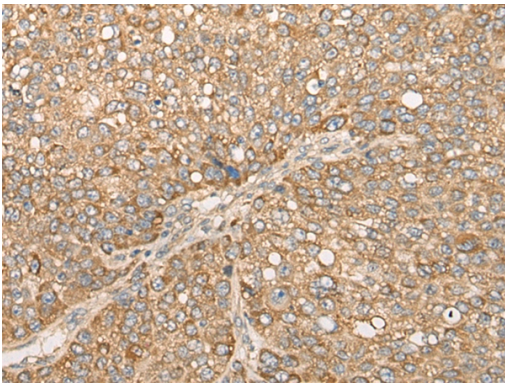


Gel: 6%SDS-PAGE

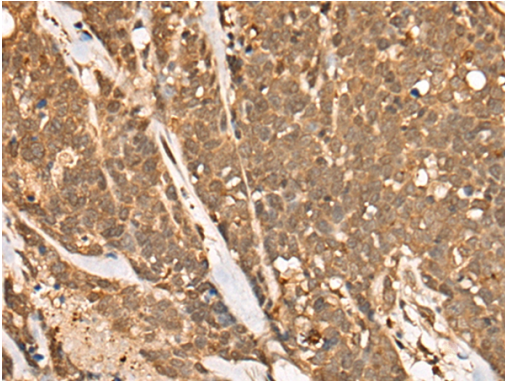
lysate: 40 µg, Lane: 231 cell lysate,

Primary antibody: 46399 (CAPN15 Antibody) at dilution 1/450

Secondary antibody: Goat anti rabbit IgG at 1/8000 dilution,  
Exposure time: 1 minute



The image on the left is immunohistochemistry of paraffin-embedded Human liver cancer tissue using 46399(CAPN15 Antibody) at dilution 1/50, on the right is treated with synthetic peptide. (Original magnification: x200)



The image on the left is immunohistochemistry of paraffin-embedded Human thyroid cancer tissue using 46399(CAPN15 Antibody) at dilution 1/50, on the right is treated with synthetic peptide. (Original magnification: x200)

## Background

This gene encodes a protein containing zinc-finger-like repeats and a calpain-like protease domain. The encoded protein may function as a transcription factor, RNA-binding protein, or in protein-protein interactions during visual system development.

Note: This product is for in vitro research use only