

## CCNB1IP1 Antibody

Catalog No: #46425

Orders: [order@signalwayantibody.com](mailto:order@signalwayantibody.com)Support: [tech@signalwayantibody.com](mailto:tech@signalwayantibody.com)

## Description

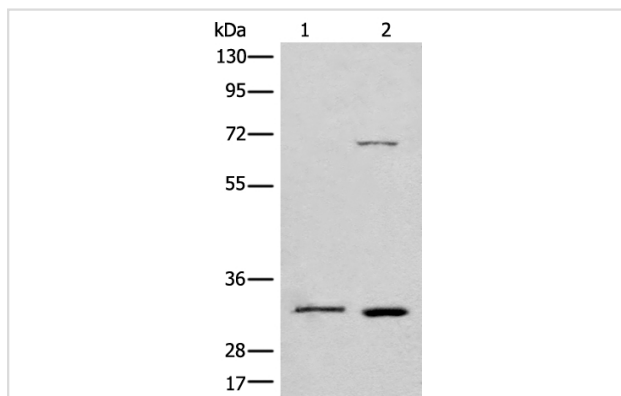
Product Name	CCNB1IP1 Antibody
Host Species	Rabbit
Clonality	Polyclonal
Purification	Antigen affinity purification
Applications	WB IHC
Species Reactivity	Hu
Specificity	The antibody detects endogenous levels of total CCNB1IP1 protein.
Immunogen Type	peptide
Immunogen Description	Synthetic protein corresponding to residues near the C terminal of human CCNB1IP1
Target Name	CCNB1IP1
Other Names	HEI10; C14orf18
Accession No.	Swiss-Prot:Q9NPC3NCBI Gene ID:57820NCBI Protein:BC000369
Uniprot	Q9NPC3
GeneID	57820;
Calculated MW	32 kDa
Concentration	0.7mg/ml
Formulation	Rabbit IgG in pH7.4 PBS, 0.05% NaN <sub>3</sub> , 40% Glycerol.
Storage	Store at -20°C

## Application Details

Western blotting: 1:200-1:1000

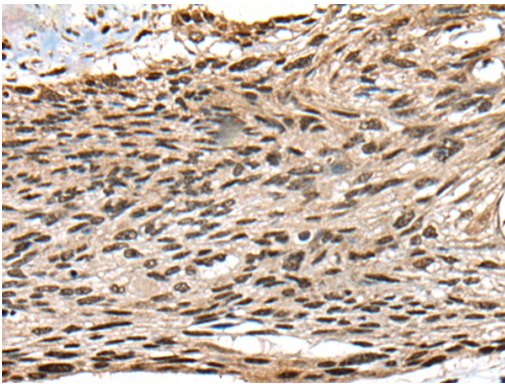
Immunohistochemistry: 1: 25-100

## Images

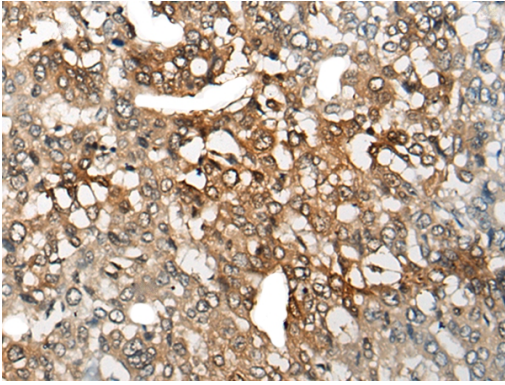


Gel: 8%SDS-PAGE

lysate: 40 µg, Lane 1-2: A172 and HT-29 cell lysates,  
Primary antibody: 46425B (CCNB1IP1 Antibody) at dilution 1/250Secondary antibody: Goat anti rabbit IgG at 1/8000 dilution,  
Exposure time: 1 minute



The image on the left is immunohistochemistry of paraffin-embedded Human esophagus cancer tissue using 46425(CCNB1IP1 Antibody) at dilution 1/25, on the right is treated with fusion protein. (Original magnification: x200)



The image on the left is immunohistochemistry of paraffin-embedded Human liver cancer tissue using 46425(CCNB1IP1 Antibody) at dilution 1/25, on the right is treated with fusion protein. (Original magnification: x200)

## Background

HEI10 is a member of the E3 ubiquitin ligase family and functions in progression of the cell cycle through G(2)/M.[supplied by OMIM, Apr 2004]

Note: This product is for in vitro research use only