

## Collagen III (1D4) Mouse mAb

Catalog No: #26245

Package Size: #26245-1 50ul #26245-2 100ul

Orders: order@signalwayantibody.com

Support: tech@signalwayantibody.com

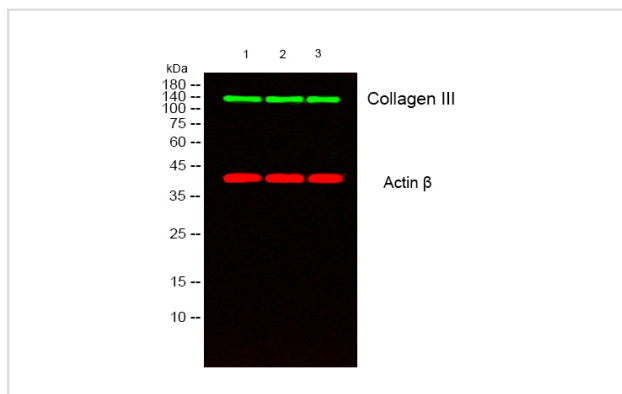
## Description

Product Name	Collagen III (1D4) Mouse mAb
Clone No.	1D4-5A10-7A4
Isotype	IgG1
Purification	Affinity purified
Applications	WB,IHC-P,IF
Species Reactivity	Hu,Ms,Rt
Immunogen Description	Synthetic Peptide of Collagen III
Conjugates	Unconjugated
Modification	Unmodification
Other Names	CO3A1, Collagen alpha 1(III) chain, Collagen III alpha 1 chain precursor, Collagen type III
Accession No.	SwissProtID:P02461 Gene ID:1281
Uniprot	P02461
GeneID	1281;
Calculated MW	138kDa
Cell Localization	Extracellular matrix, Secreted
Tag Info	The antibody detects endogenous Collagen III protein.
Formulation	PBS, pH 7.4, containing 0.02% sodium azide as Preservative and 50% Glycerol.
Storage	-20°C/1 year

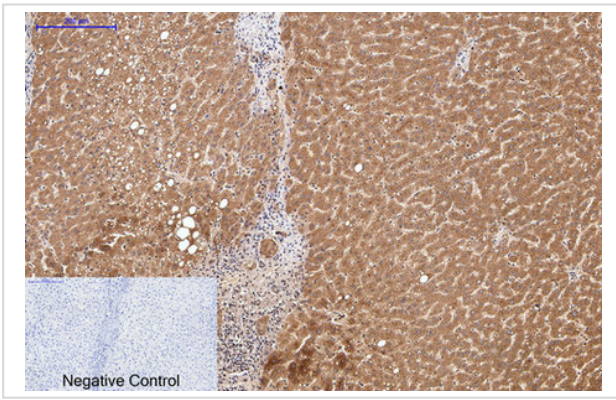
## Application Details

WB: 1:1000 IF 1:200 IHC 1:50-300

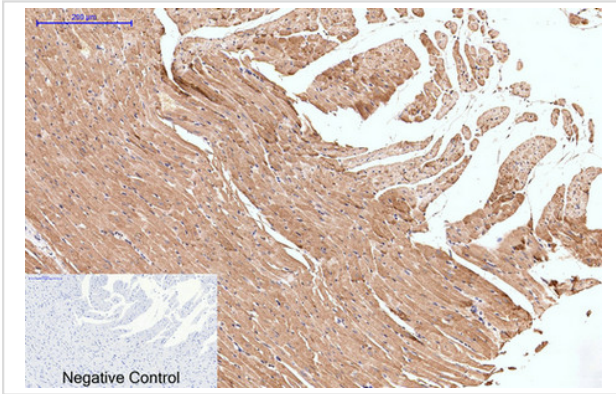
## Images



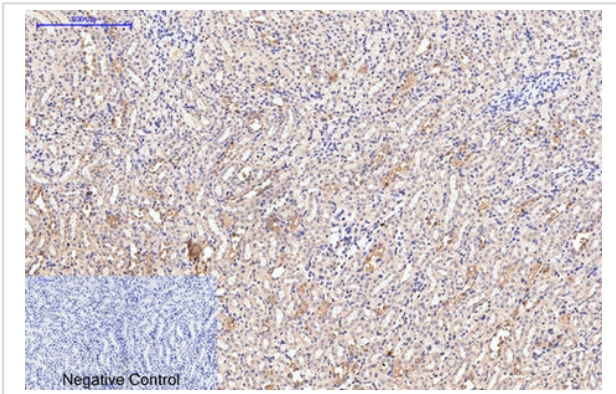
Western blot analysis of lysates from 1) MCF7 , 2) HeLa, 3) 293T cells, oO GreenoO primary antibody was diluted at 1:1000, 4° over night, secondary antibody was diluted at 1:10000, 37° 1hour. oO RedoO Actin β Polyclonal Antibody was diluted at 1:5000 as loading control, 4° over night,secondary antibody was diluted at 1:10000, 37° 1hour.



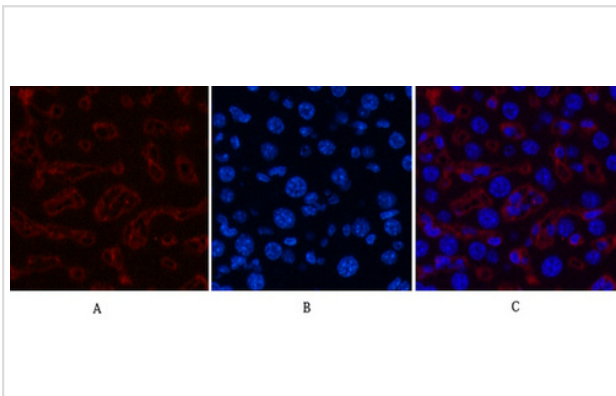
Immunohistochemical analysis of paraffin-embedded Human-liver tissue. 1, Collagen III Monoclonal Antibody(Q76) was diluted at 1:200(4°C, overnight). 2, Sodium citrate pH 6.0 was used for antibody retrieval(>98°C, 20min). 3, Secondary antibody was diluted at 1:200(room temperature, 30min). Negative control was used by secondary antibody only.



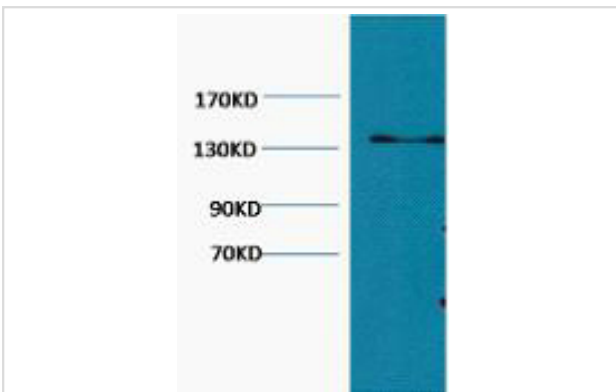
Immunohistochemical analysis of paraffin-embedded Rat-heart tissue. 1, Collagen III Monoclonal Antibody(Q76) was diluted at 1:200(4°C, overnight). 2, Sodium citrate pH 6.0 was used for antibody retrieval(>98°C, 20min). 3, Secondary antibody was diluted at 1:200(room temperature, 30min). Negative control was used by secondary antibody only.



Immunohistochemical analysis of paraffin-embedded Mouse-kidney tissue. 1, Collagen III Monoclonal Antibody(Q76) was diluted at 1:200(4°C, overnight). 2, Sodium citrate pH 6.0 was used for antibody retrieval(>98°C, 20min). 3, Secondary antibody was diluted at 1:200(room temperature, 30min). Negative control was used by secondary antibody only.



Immunofluorescence analysis of Mouse-liver tissue. 1, Collagen III Monoclonal Antibody(Q76)(red) was diluted at 1:200(4°C, overnight). 2, Cy3 labeled Secondary antibody was diluted at 1:300(room temperature, 50min). 3, Picture B: DAPI(blue) 10min. Picture A: Target. Picture B: DAPI. Picture C: merge of A+B



Western blot analysis of Hela, diluted at 1:1000.

---

Note: This product is for in vitro research use only