

CD28 Antibody

Catalog No: #46435

Orders: order@signalwayantibody.comSupport: tech@signalwayantibody.com

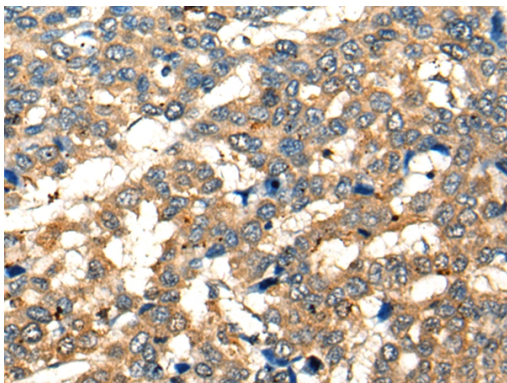
Description

| | |
|-----------------------|--|
| Product Name | CD28 Antibody |
| Host Species | Rabbit |
| Clonality | Polyclonal |
| Purification | Antigen affinity purification |
| Applications | IHC |
| Species Reactivity | Hu |
| Specificity | The antibody detects endogenous levels of total CD28 protein. |
| Immunogen Type | peptide |
| Immunogen Description | Synthetic peptide corresponding to internal residues of human CD28 |
| Target Name | CD28 |
| Other Names | Tp44 |
| Accession No. | Swiss-Prot:P10747 NCBI Gene ID:940NCBI Protein:NP_006130 |
| Uniprot | P10747 |
| GeneID | 940; |
| Concentration | 0.5mg/ml |
| Formulation | Rabbit IgG in pH7.4 PBS, 0.05% NaN ₃ , 40% Glycerol. |
| Storage | Store at -20°C |

Application Details

Immunohistochemistry: 1: 25-100

Images



The image on the left is immunohistochemistry of paraffin-embedded Human liver cancer tissue using 46435(CD28 Antibody) at dilution 1/20, on the right is treated with synthetic peptide. (Original magnification: x200)

Background

The protein encoded by this gene is essential for T-cell proliferation and survival, cytokine production, and T-helper type-2 development. Several alternatively spliced transcript variants encoding different isoforms have been found for this gene.

Note: This product is for in vitro research use only