

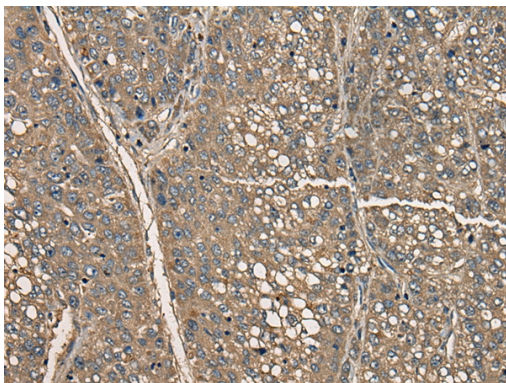
Description

Product Name	CD5 Antibody
Host Species	Rabbit
Clonality	Polyclonal
Purification	Antigen affinity purification
Applications	IHC
Species Reactivity	Hu
Specificity	The antibody detects endogenous levels of total CD5 protein.
Immunogen Type	peptide
Immunogen Description	Synthetic peptide corresponding to residues near the C terminal of human CD5
Target Name	CD5
Other Names	T1; LEU1
Accession No.	Swiss-Prot:P06127 NCBI Gene ID:921NCBI Protein:NP_055022
Uniprot	P06127
GeneID	921;
Concentration	1.3mg/ml
Formulation	Rabbit IgG in pH7.4 PBS, 0.05% NaN ₃ , 40% Glycerol.
Storage	Store at -20°C

Application Details

Immunohistochemistry: 1: 30-150

Images



The image on the left is immunohistochemistry of paraffin-embedded Human liver cancer tissue using 46437(CD5 Antibody) at dilution 1/35, on the right is treated with synthetic peptide. (Original magnification: x200)

Background

CD5 (also designated Lyt-1) has been identified as a transmembrane glycoprotein that is expressed on 70% of normal peripheral blood lymphocytes and on virtually all T lymphocytes in thymus and peripheral blood. Activation of T cells through the T cell receptor (TCR) results in tyrosine phosphorylation of CD5, and the absence of CD5 renders T cells hyper-responsive to TCR-mediated activation. CD5 associates with the TCR/ CD3- ζ chain and with the Src family kinase Lck p56.^lIn vitro studies have shown a 10- to 15-fold increase in the kinase activity of Lck bound to CD5. The B

cell antigen, CD72, serves as a receptor for CD5. The consequence of CD5 binding to its cognate receptor is still in question and likely plays a role in thymic selection. May act as a receptor in regulating T-cell proliferation.

Note: This product is for in vitro research use only