

## CDC14B Antibody

Catalog No: #46441

Orders: [order@signalwayantibody.com](mailto:order@signalwayantibody.com)Support: [tech@signalwayantibody.com](mailto:tech@signalwayantibody.com)

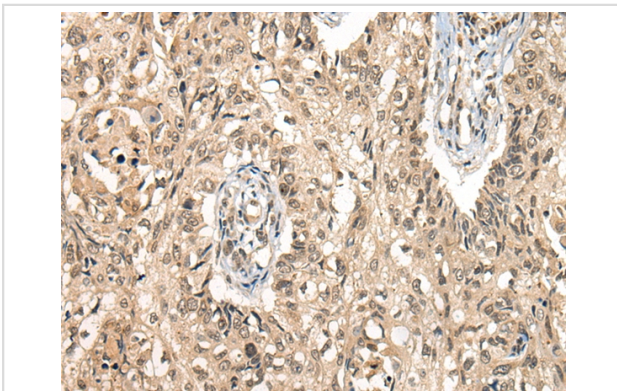
## Description

Product Name	CDC14B Antibody
Host Species	Rabbit
Clonality	Polyclonal
Purification	Antigen affinity purification
Applications	IHC
Species Reactivity	Hu
Specificity	The antibody detects endogenous levels of total CDC14B protein.
Immunogen Type	peptide
Immunogen Description	Synthetic peptide corresponding to residues near the C terminal of human CDC14B
Target Name	CDC14B
Other Names	CDC14B3; Cdc14B1; Cdc14B2; hCDC14B
Accession No.	Swiss-Prot:O60729 NCBI Gene ID:8555NCBI Protein:NP_201588
Uniprot	O60729
GeneID	8555;
Concentration	0.8mg/ml
Formulation	Rabbit IgG in pH7.4 PBS, 0.05% NaN <sub>3</sub> , 40% Glycerol.
Storage	Store at -20°C

## Application Details

Immunohistochemistry: 1: 25-100

## Images



The image on the left is immunohistochemistry of paraffin-embedded Human lung cancer tissue using 46441(CDC14B Antibody) at dilution 1/20, on the right is treated with synthetic peptide. (Original magnification: x200)

## Background

The protein encoded by this gene is a member of the dual specificity protein tyrosine phosphatase family. This protein is highly similar to *Saccharomyces cerevisiae* Cdc14, a protein tyrosine phosphatase involved in the exit of cell mitosis and initiation of DNA replication, which suggests the role in cell cycle control. This protein has been shown to interact with and dephosphorylates tumor suppressor protein p53, and is thought to regulate the function of p53. Alternative splice of this gene results in 3 transcript variants encoding distinct isoforms.

---

Note: This product is for in vitro research use only