

CDC42BPA Antibody

Catalog No: #46443

Orders: order@signalwayantibody.comSupport: tech@signalwayantibody.com

Description

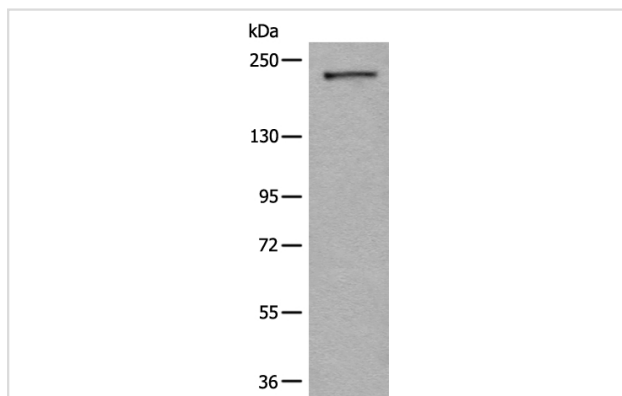
Product Name	CDC42BPA Antibody
Host Species	Rabbit
Clonality	Polyclonal
Purification	Antigen affinity purification
Applications	WB IHC
Species Reactivity	Hu Ms Rt
Specificity	The antibody detects endogenous levels of total CDC42BPA protein.
Immunogen Type	peptide
Immunogen Description	Synthetic peptide corresponding to residues near the C terminal of human CDC42BPA
Target Name	CDC42BPA
Other Names	MRCK; MRCKA; PK428
Accession No.	Swiss-Prot:Q5VT25NCBI Gene ID:8476NCBI Protein:XP_005273381
Uniprot	Q5VT25
GeneID	8476;
Calculated MW	197 kDa
Concentration	1.6mg/ml
Formulation	Rabbit IgG in pH7.4 PBS, 0.05% NaN ₃ , 40% Glycerol.
Storage	Store at -20°C

Application Details

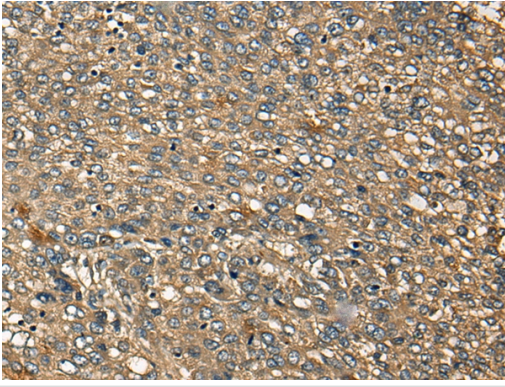
Western blotting: 1:500-1:2000

Immunohistochemistry: 1: 30-150

Images



Gel: 6%SDS-PAGE
 lysate: 40 µg, Lane: A172 cell lysate,
 Primary antibody: 46443B (CDC42BPA Antibody) at dilution 1/600
 Secondary antibody: Goat anti rabbit IgG at 1/8000 dilution,
 Exposure time: 5 minutes



The image on the left is immunohistochemistry of paraffin-embedded Human liver cancer tissue using 46443(CDC42BPA Antibody) at dilution 1/45, on the right is treated with synthetic peptide. (Original magnification: x200)

Background

The protein encoded by this gene is a member of the Serine/Threonine protein kinase family. This kinase contains multiple functional domains. Its kinase domain is highly similar to that of the myotonic dystrophy protein kinase (DMPK). This kinase also contains a Rac interactive binding (CRIB) domain, and has been shown to bind CDC42. It may function as a CDC42 downstream effector mediating CDC42 induced peripheral actin formation, and promoting cytoskeletal reorganization. Multiple alternatively spliced transcript variants have been described, and the full-length nature of two of them has been reported.

Note: This product is for in vitro research use only