

## CDCA4 Antibody

Catalog No: #46447

Orders: order@signalwayantibody.com

Support: tech@signalwayantibody.com

## Description

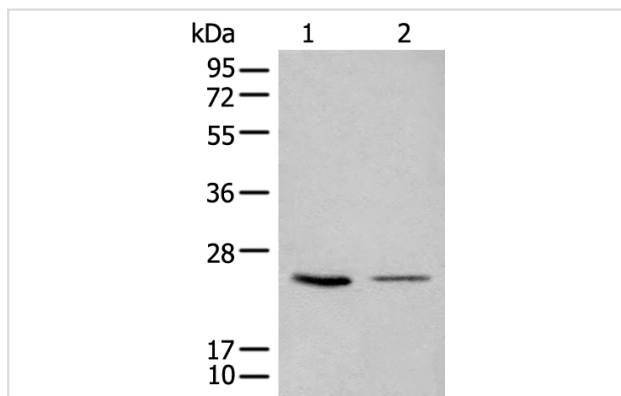
Product Name	CDCA4 Antibody
Host Species	Rabbit
Clonality	Polyclonal
Purification	Antigen affinity purification
Applications	WB IHC
Species Reactivity	Hu
Specificity	The antibody detects endogenous levels of total CDCA4 protein.
Immunogen Type	peptide
Immunogen Description	Full length fusion protein of human CDCA4
Target Name	CDCA4
Other Names	HEPP; SEI-3/HEPP
Accession No.	Swiss-Prot:Q9BXL8NCBI Gene ID:55038NCBI Protein:BC011736
Uniprot	Q9BXL8
GeneID	55038;
Calculated MW	26 kDa
Concentration	1.7mg/ml
Formulation	Rabbit IgG in pH7.4 PBS, 0.05% NaN <sub>3</sub> , 40% Glycerol.
Storage	Store at -20°C

## Application Details

Western blotting: 1:1000-1:5000

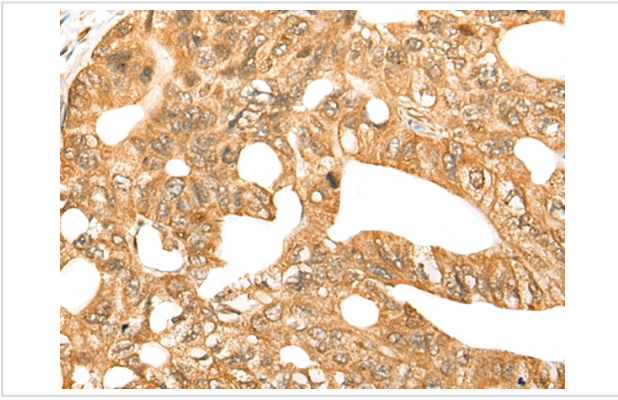
Immunohistochemistry: 1: 50-300

## Images



Gel: 12%SDS-PAGE

lysate: 40 µg, Lane 1-2: 293T and LOVO cell lysates,  
Primary antibody: 46447B (CDCA4 Antibody) at dilution  
1/1000Secondary antibody: Goat anti rabbit IgG at 1/8000 dilution,  
Exposure time: 5 seconds



The image on the left is immunohistochemistry of paraffin-embedded Human gastric cancer tissue using 46447(CDCA4 Antibody) at dilution 1/70, on the right is treated with fusion protein. (Original magnification: x200)

## Background

This gene encodes a protein that belongs to the E2F family of transcription factors. This protein regulates E2F-dependent transcriptional activation and cell proliferation, mainly through the E2F/retinoblastoma protein pathway. It also functions in the regulation of JUN oncogene expression. This protein shows distinctive nuclear-mitotic apparatus distribution, it is involved in spindle organization from prometaphase, and may also play a role as a midzone factor involved in chromosome segregation or cytokinesis. Two alternatively spliced transcript variants encoding the same protein have been noted for this gene. Two pseudogenes have also been identified on chromosome 1.

Note: This product is for in vitro research use only