

CDH16 Antibody

Catalog No: #46449

Orders: order@signalwayantibody.com

Support: tech@signalwayantibody.com

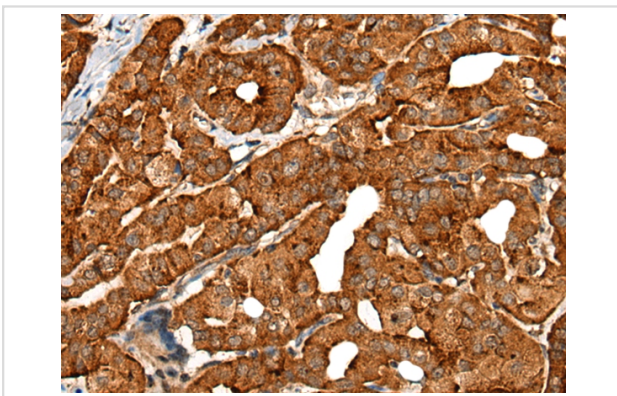
Description

| | |
|-----------------------|--|
| Product Name | CDH16 Antibody |
| Host Species | Rabbit |
| Clonality | Polyclonal |
| Purification | Antigen affinity purification |
| Applications | IHC |
| Species Reactivity | Hu |
| Specificity | The antibody detects endogenous levels of total CDH16 protein. |
| Immunogen Type | peptide |
| Immunogen Description | Synthetic protein corresponding to residues near the C terminal of human CDH16 |
| Target Name | CDH16 |
| Accession No. | Swiss-Prot:O75309NCBI Gene ID:1014NCBI Protein:BC027912 |
| Uniprot | O75309 |
| GeneID | 1014; |
| Concentration | 0.8mg/ml |
| Formulation | Rabbit IgG in pH7.4 PBS, 0.05% NaN ₃ , 40% Glycerol. |
| Storage | Store at -20°C |

Application Details

Immunohistochemistry: 1: 40-200

Images



The image on the left is immunohistochemistry of paraffin-embedded Human thyroid cancer tissue using 46449(CDH16 Antibody) at dilution 1/30, on the right is treated with fusion protein. (Original magnification: x200)

Background

This gene is a member of the cadherin superfamily, genes encoding calcium-dependent, membrane-associated glycoproteins. Mapped to a previously identified cluster of cadherin genes on chromosome 16q22.1, the gene localizes with superfamily members CDH1, CDH3, CDH5, CDH8 and CDH11. The protein consists of an extracellular domain containing 6 cadherin domains, a transmembrane region and a truncated cytoplasmic domain but lacks the prosequence and tripeptide HAV adhesion recognition sequence typical of most classical cadherins. Expression is exclusively in kidney, where the protein functions as the principal mediator of homotypic cellular recognition, playing a role in the morphogenic direction of tissue development.

Alternatively spliced transcript variants encoding distinct isoforms have been identified.?

Note: This product is for in vitro research use only