

CDH19 Antibody

Catalog No: #46451

Orders: order@signalwayantibody.comSupport: tech@signalwayantibody.com

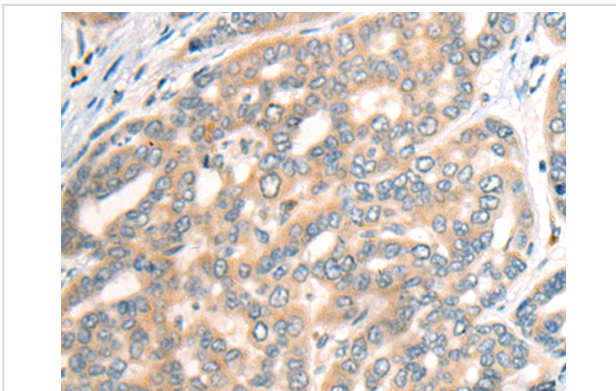
Description

Product Name	CDH19 Antibody
Host Species	Rabbit
Clonality	Polyclonal
Purification	Antigen affinity purification
Applications	IHC
Species Reactivity	Hu
Specificity	The antibody detects endogenous levels of total CDH19 protein.
Immunogen Type	peptide
Immunogen Description	Synthetic protein corresponding to residues near the C terminal of human CDH19
Target Name	CDH19
Other Names	CDH7; CDH7L2
Accession No.	Swiss-Prot:Q9H159NCBI Gene ID:28513NCBI Protein:BC015877
Uniprot	Q9H159
GeneID	28513;
Concentration	0.8mg/ml
Formulation	Rabbit IgG in pH7.4 PBS, 0.05% NaN ₃ , 40% Glycerol.
Storage	Store at -20°C

Application Details

Immunohistochemistry: 1: 25-100

Images



The image on the left is immunohistochemistry of paraffin-embedded Human liver cancer tissue using 46451(CDH19 Antibody) at dilution 1/35, on the right is treated with fusion protein. (Original magnification: x200)

Background

This gene is one of three related type II cadherin genes situated in a cluster on chromosome 18. The encoded protein is a calcium dependent cell-cell adhesion glycoprotein containing five extracellular cadherin repeats. Loss of cadherins may be associated with cancer formation. Alternative splicing results in multiple transcript variants for this gene.?

Note: This product is for in vitro research use only