

## CELA1 Antibody

Catalog No: #46467

Orders: [order@signalwayantibody.com](mailto:order@signalwayantibody.com)Support: [tech@signalwayantibody.com](mailto:tech@signalwayantibody.com)

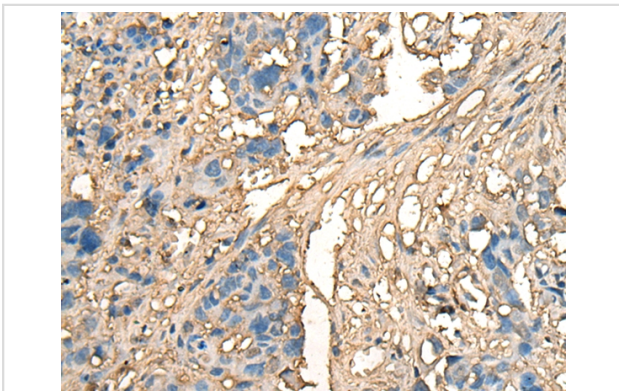
## Description

Product Name	CELA1 Antibody
Host Species	Rabbit
Clonality	Polyclonal
Purification	Antigen affinity purification
Applications	IHC
Species Reactivity	Hu
Specificity	The antibody detects endogenous levels of total CELA1 protein.
Immunogen Type	peptide
Immunogen Description	Synthetic peptide corresponding to internal residues of human CELA1
Target Name	CELA1
Other Names	ELA1
Accession No.	Swiss-Prot:Q9UNI1 NCBI Gene ID:1990NCBI Protein:NP_001962
Uniprot	Q9UNI1
GeneID	1990;
Concentration	2.2mg/ml
Formulation	Rabbit IgG in pH7.4 PBS, 0.05% NaN <sub>3</sub> , 40% Glycerol.
Storage	Store at -20°C

## Application Details

Immunohistochemistry: 1: 50-300

## Images



The image on the left is immunohistochemistry of paraffin-embedded Human lung cancer tissue using 46467(CELA1 Antibody) at dilution 1/70, on the right is treated with synthetic peptide. (Original magnification: x200)

## Background

Elastases form a subfamily of serine proteases that hydrolyze many proteins in addition to elastin. Humans have six elastase genes which encode the structurally similar proteins elastase 1, 2, 2A, 2B, 3A, and 3B. Unlike other elastases, pancreatic elastase 1 is not expressed in the pancreas. To date, elastase 1 expression has only been detected in skin keratinocytes. Clinical literature that describes human elastase 1 activity in the pancreas or fecal material is actually referring to chymotrypsin-like elastase family, member 3B.

---

Note: This product is for in vitro research use only