

CENPT Antibody

Catalog No: #46471

Orders: order@signalwayantibody.comSupport: tech@signalwayantibody.com

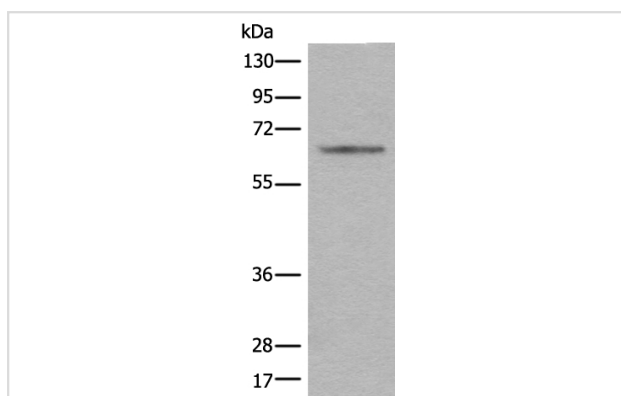
Description

Product Name	CENPT Antibody
Host Species	Rabbit
Clonality	Polyclonal
Purification	Antigen affinity purification
Applications	WB
Species Reactivity	Hu Rt
Specificity	The antibody detects endogenous levels of total CENPT protein.
Immunogen Type	peptide
Immunogen Description	Synthetic peptide corresponding to residues near the C terminal of human CENPT
Target Name	CENPT
Other Names	CENP-T; C16orf56
Accession No.	Swiss-Prot:Q96BT3NCBI Gene ID:80152NCBI Protein:NP_079358
Uniprot	Q96BT3
GeneID	80152;
Calculated MW	60 kDa
Concentration	1.1mg/ml
Formulation	Rabbit IgG in pH7.4 PBS, 0.05% NaN ₃ , 40% Glycerol.
Storage	Store at -20°C

Application Details

Western blotting: 1:200-1:1000

Images



Gel: 8%SDS-PAGE

lysate: 40 µg, Lane: Human testis tissue lysate,

Primary antibody: 46471 (CENPT Antibody) at dilution 1/200

Secondary antibody: Goat anti rabbit IgG at 1/8000 dilution,
Exposure time: 5 minutes

Background

The centromere is a specialized chromatin domain, present throughout the cell cycle, that acts as a platform on which the transient assembly of the kinetochore occurs during mitosis. All active centromeres are characterized by the presence of long arrays of nucleosomes in which CENPA (MIM

117139) replaces histone H3 (see MIM 601128). CENPT is an additional factor required for centromere assembly (Foltz et al., 2006).

Note: This product is for in vitro research use only