

CENPT Antibody

Catalog No: #46472

Orders: order@signalwayantibody.comSupport: tech@signalwayantibody.com

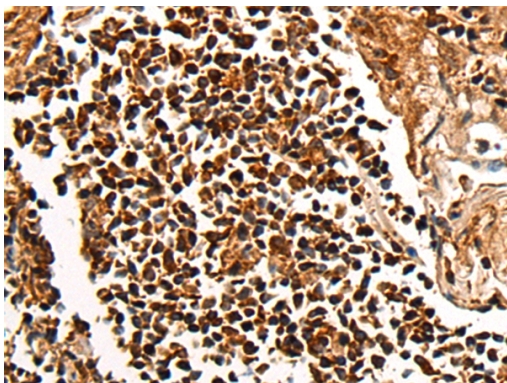
Description

Product Name	CENPT Antibody
Host Species	Rabbit
Clonality	Polyclonal
Purification	Antigen affinity purification
Applications	IHC
Species Reactivity	Hu Rt
Specificity	The antibody detects endogenous levels of total CENPT protein.
Immunogen Type	peptide
Immunogen Description	Synthetic peptide corresponding to residues near the C terminal of human CENPT
Target Name	CENPT
Other Names	CENP-T; C16orf56
Accession No.	Swiss-Prot:Q96BT3 NCBI Gene ID:80152NCBI Protein:NP_079358
Uniprot	Q96BT3
GeneID	80152;
Concentration	0.8mg/ml
Formulation	Rabbit IgG in pH7.4 PBS, 0.05% NaN ₃ , 40% Glycerol.
Storage	Store at -20°C

Application Details

Immunohistochemistry: 1: 25-100

Images



The image on the left is immunohistochemistry of paraffin-embedded Human tonsil tissue using 46472(CENPT Antibody) at dilution 1/35, on the right is treated with synthetic peptide. (Original magnification: x200)

Background

The centromere is a specialized chromatin domain, present throughout the cell cycle, that acts as a platform on which the transient assembly of the kinetochore occurs during mitosis. All active centromeres are characterized by the presence of long arrays of nucleosomes in which CENPA (MIM 117139) replaces histone H3 (see MIM 601128). CENPT is an additional factor required for centromere assembly (Foltz et al., 2006).

Note: This product is for in vitro research use only