

CEP290 Antibody

Catalog No: #46475

Orders: order@signalwayantibody.comSupport: tech@signalwayantibody.com

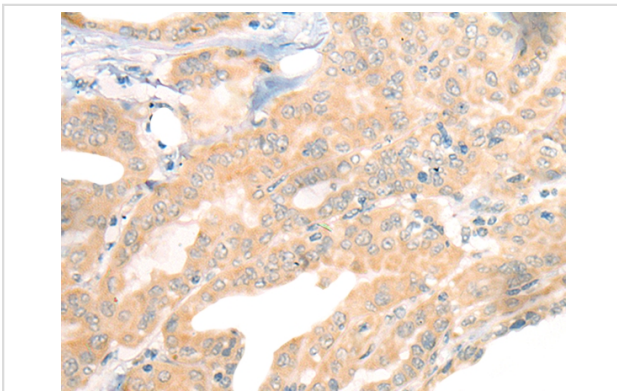
Description

Product Name	CEP290 Antibody
Host Species	Rabbit
Clonality	Polyclonal
Purification	Antigen affinity purification
Applications	IHC
Species Reactivity	Hu
Specificity	The antibody detects endogenous levels of total CEP290 protein.
Immunogen Type	peptide
Immunogen Description	Synthetic protein corresponding to internal residues of human CEP290
Target Name	CEP290
Other Names	CT87; MKS4; POC3; rd16; BBS14; JBTS5; LCA10; NPHP6; SLSN6; 3H11Ag
Accession No.	Swiss-Prot:O15078NCBI Gene ID:80184NCBI Protein:BC008641
Uniprot	O15078
GeneID	80184;
Concentration	0.7mg/ml
Formulation	Rabbit IgG in pH7.4 PBS, 0.05% NaN ₃ , 40% Glycerol.
Storage	Store at -20°C

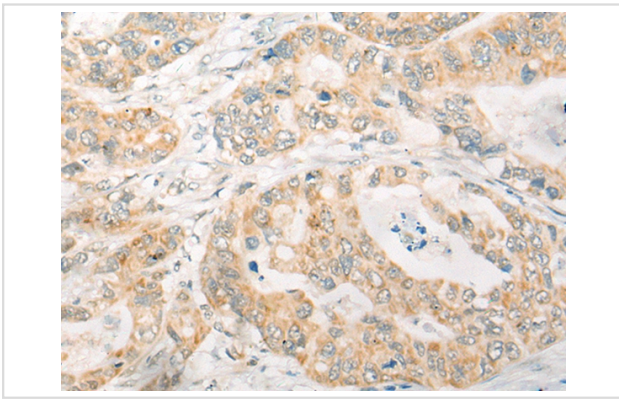
Application Details

Immunohistochemistry: 1: 25-100

Images



The image on the left is immunohistochemistry of paraffin-embedded Human thyroid cancer tissue using 46475(CEP290 Antibody) at dilution 1/25, on the right is treated with fusion protein. (Original magnification: x200)



The image on the left is immunohistochemistry of paraffin-embedded Human gastric cancer tissue using 46475(CEP290 Antibody) at dilution 1/25, on the right is treated with fusion protein. (Original magnification: x200)

Background

This gene encodes a protein with 13 putative coiled-coil domains, a region with homology to SMC chromosome segregation ATPases, six KID motifs, three tropomyosin homology domains and an ATP/GTP binding site motif A. The protein is localized to the centrosome and cilia and has sites for N-glycosylation, tyrosine sulfation, phosphorylation, N-myristoylation, and amidation. Mutations in this gene have been associated with Joubert syndrome and nephronophthisis and the presence of antibodies against this protein is associated with several forms of cancer.

Note: This product is for in vitro research use only