

## CEP70 Antibody

Catalog No: #46477

Orders: order@signalwayantibody.com

Support: tech@signalwayantibody.com

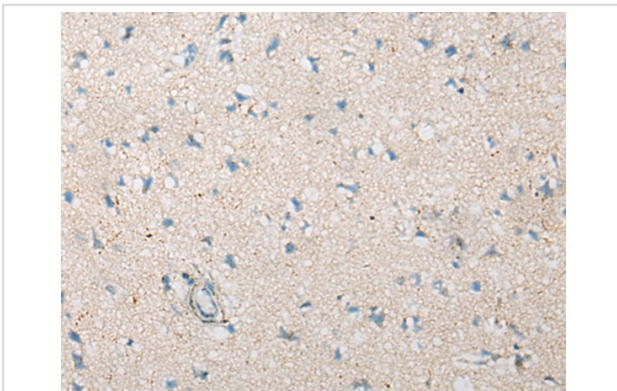
## Description

Product Name	CEP70 Antibody
Host Species	Rabbit
Clonality	Polyclonal
Purification	Antigen affinity purification
Applications	IHC
Species Reactivity	Hu
Specificity	The antibody detects endogenous levels of total CEP70 protein.
Immunogen Type	peptide
Immunogen Description	Synthetic protein corresponding to residues near the N terminal of human CEP70
Target Name	CEP70
Other Names	BITE
Accession No.	Swiss-Prot:Q8NHQ1NCBI Gene ID:80321NCBI Protein:BC016050
Uniprot	Q8NHQ1
GeneID	80321;
Concentration	0.9mg/ml
Formulation	Rabbit IgG in pH7.4 PBS, 0.05% NaN <sub>3</sub> , 40% Glycerol.
Storage	Store at -20°C

## Application Details

Immunohistochemistry: 1: 20-100

## Images



The image on the left is immunohistochemistry of paraffin-embedded Human brain tissue using 46477(CEP70 Antibody) at dilution 1/35, on the right is treated with fusion protein. (Original magnification: x200)

## Background

Plays a role in the organization of both preexisting and nascent microtubules in interphase cells. During mitosis, required for the organization and orientation of the mitotic spindle.

---

Note: This product is for in vitro research use only