

CEP72 Antibody

Catalog No: #46478

Orders: order@signalwayantibody.com

Support: tech@signalwayantibody.com

Description

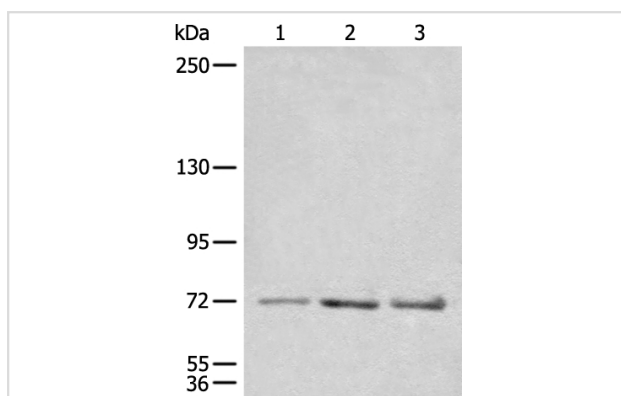
Product Name	CEP72 Antibody
Host Species	Rabbit
Clonality	Polyclonal
Purification	Antigen affinity purification
Applications	WB IHC
Species Reactivity	Hu Ms
Specificity	The antibody detects endogenous levels of total CEP72 protein.
Immunogen Type	peptide
Immunogen Description	Synthetic protein corresponding to residues near the C terminal of human CEP72
Target Name	CEP72
Accession No.	Swiss-Prot:Q9P209NCBI Gene ID:55722NCBI Protein:BC000132
Uniprot	Q9P209
GeneID	55722;
Calculated MW	72 kDa
Concentration	1mg/ml
Formulation	Rabbit IgG in pH7.4 PBS, 0.05% NaN ₃ , 40% Glycerol.
Storage	Store at -20°C

Application Details

Western blotting: 1:200-1:1000

Immunohistochemistry: 1: 30-150

Images

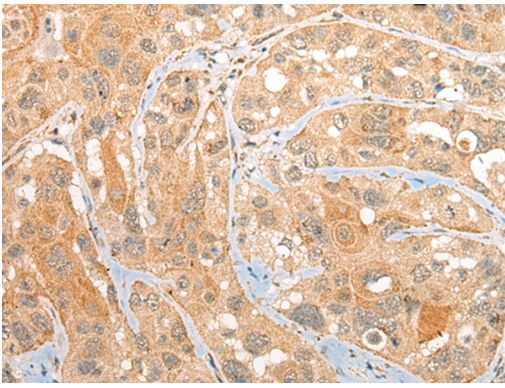


Gel: 6%SDS-PAGE

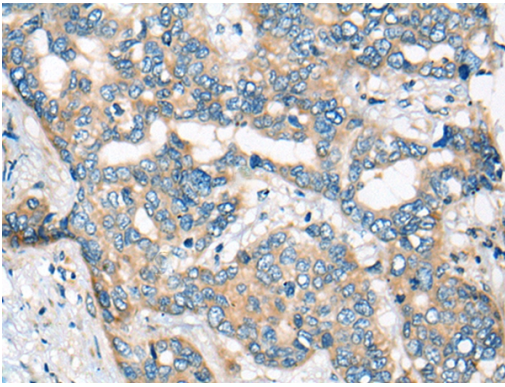
lysate: 40 µg, Lane 1-3: TM4BEB-NIH/3T3 and Jurkat cell lysates,

Primary antibody: 46478BCEP72 Antibody) at dilution 1/600

Secondary antibody: Goat anti rabbit IgG at 1/8000 dilution, Exposure time: 1 minute



The image on the left is immunohistochemistry of paraffin-embedded Human esophagus cancer tissue using 46478(CEP72 Antibody) at dilution 1/40, on the right is treated with fusion protein. (Original magnification: x200)



The image on the left is immunohistochemistry of paraffin-embedded Human liver cancer tissue using 46478(CEP72 Antibody) at dilution 1/40, on the right is treated with fusion protein. (Original magnification: x200)

Background

Centrosomes are the major microtubule-organizing centers of mammalian cells. They are composed of a centriole pair and surrounding microtubule-nucleating material termed pericentriolar material (PCM). Bipolar mitotic spindle assembly relies on two intertwined processes: centriole duplication and centrosome maturation. Failure to properly orchestrate centrosome duplication and maturation is subsequently linked to spindle defects, which can result in aneuploidy and promote cancer progression. CEP72 (centrosomal protein 72kDa) is a 647 amino acid protein that localizes to the centrosome and centrosome-surrounding particles throughout the cell cycle. Involved in the recruitment of key centrosomal proteins to the centrosome, CEP72 provides centrosomal microtubule-nucleation activity on the γ Tubulin ring complexes and has critical roles in forming a focused bipolar spindle, which is needed for proper tension generation between sister chromatids. CEP72 exists as two alternatively spliced isoforms.

Note: This product is for in vitro research use only