

## LC3B Polyclonal Antibody

Catalog No: #29075

Package Size: #29075-1 50ul #29075-2 100ul

Orders: [order@signalwayantibody.com](mailto:order@signalwayantibody.com)Support: [tech@signalwayantibody.com](mailto:tech@signalwayantibody.com)

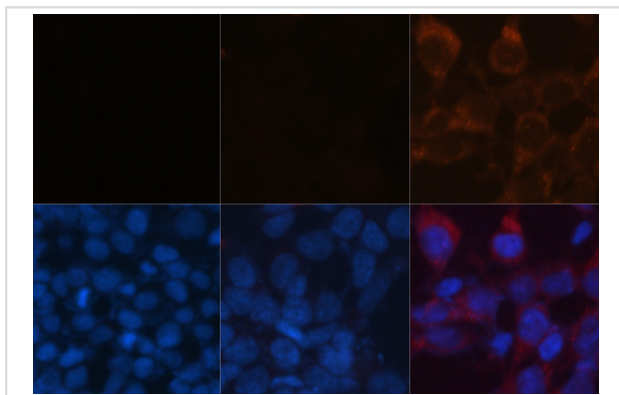
## Description

Product Name	LC3B Polyclonal Antibody
Host Species	Rabbit
Clonality	Polyclonal
Isotype	IgG
Purification	Affinity purification
Applications	WB,IHC,IF
Species Reactivity	Human,Mouse,Rat
Immunogen Description	A synthetic peptide of human LC3B (NP_073729.1).
Other Names	LC3B;ATG8F;MAP1LC3B-a;MAP1A/1BLC3;MAP1LC3B;LC3A/LC3B
Accession No.	GeneID:81631Swiss Prot:Q9GZQ8
Uniprot	Q9GZQ8
GeneID	81631;
Calculated MW	14kDa
SDS-PAGE MW	14kDa/15kDa
Concentration	1.0mg/ml
Formulation	PBS with 0.02% sodium azide,50% glycerol,pH7.3.
Storage	Store at -20°C. Avoid freeze / thaw cycles. Buffer: PBS with 0.02% sodium azide,50% glycerol,pH7.126.

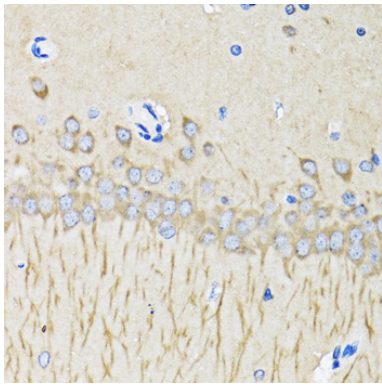
## Application Details

WB 1:500 - 1:2000 IHC 1:50 - 1:200 IF 1:50 - 1:200

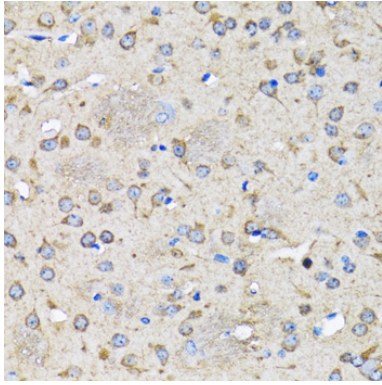
## Images



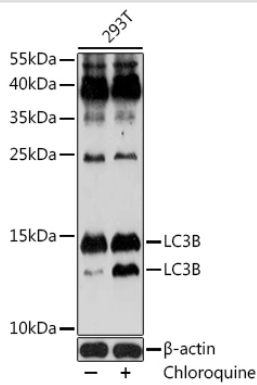
Immunofluorescence analysis of LC3B knockout 293T cells treated by chloroquine and wild-type 293T cells treated by chloroquine using LC3B Rabbit pAb at dilution of 1:100. Blue: DAPI for nuclear staining.



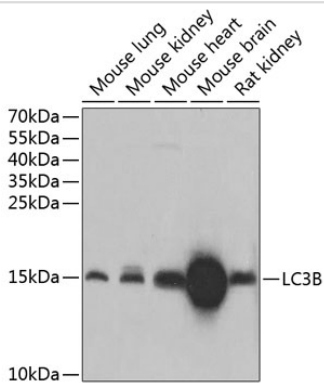
Immunohistochemistry of paraffin-embedded mouse brain using LC3B antibody at dilution of 1:100 .



Immunohistochemistry of paraffin-embedded rat brain using LC3B antibody at dilution of 1:100 .



Western blot analysis of extracts of 293T cells, using LC3B antibody at 1:1000 dilution. 293T cells were treated by Chloroquine at 37°C for 20 hours.



Western blot analysis of extracts of various cell lines, using LC3B antibody at 1:1000 dilution.

## Background

The product of this gene is a subunit of neuronal microtubule-associated MAP1A and MAP1B proteins, which are involved in microtubule assembly and important for neurogenesis. Studies on the rat homolog implicate a role for this gene in autophagy, a process that involves the bulk degradation of cytoplasmic component.

---

Note: This product is for in vitro research use only