

CETN3 Antibody

Catalog No: #46481

Orders: order@signalwayantibody.com

Support: tech@signalwayantibody.com

Description

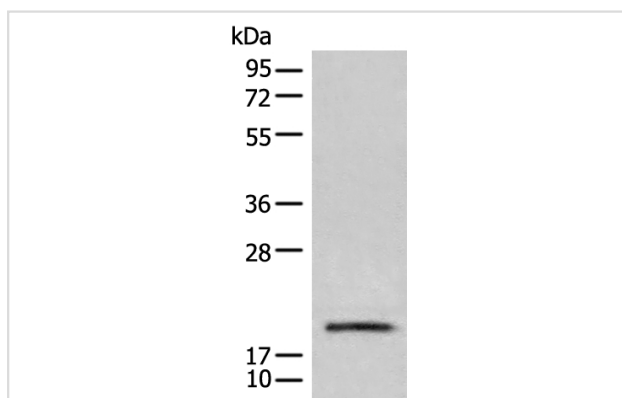
Product Name	CETN3 Antibody
Host Species	Rabbit
Clonality	Polyclonal
Purification	Antigen affinity purification
Applications	WB IHC
Species Reactivity	Hu
Specificity	The antibody detects endogenous levels of total CETN3 protein.
Immunogen Type	peptide
Immunogen Description	Full length fusion protein of human CETN3
Target Name	CETN3
Other Names	CEN3; CDC31
Accession No.	Swiss-Prot:O15182NCBI Gene ID:1070NCBI Protein:BC005383
Uniprot	O15182
GeneID	1070;
Calculated MW	20 kDa
Concentration	1.1mg/ml
Formulation	Rabbit IgG in pH7.4 PBS, 0.05% NaN ₃ , 40% Glycerol.
Storage	Store at -20°C

Application Details

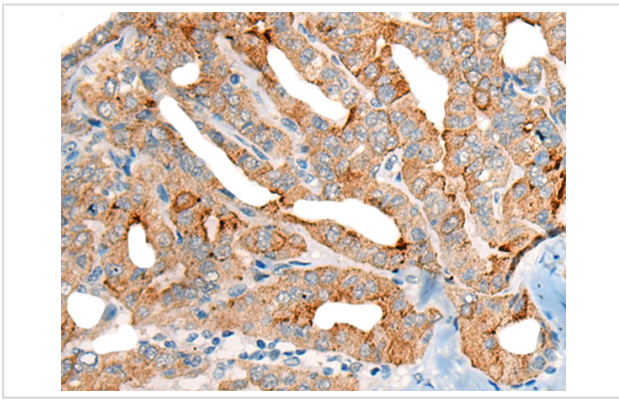
Western blotting: 1:200-1:1000

Immunohistochemistry: 1: 30-150

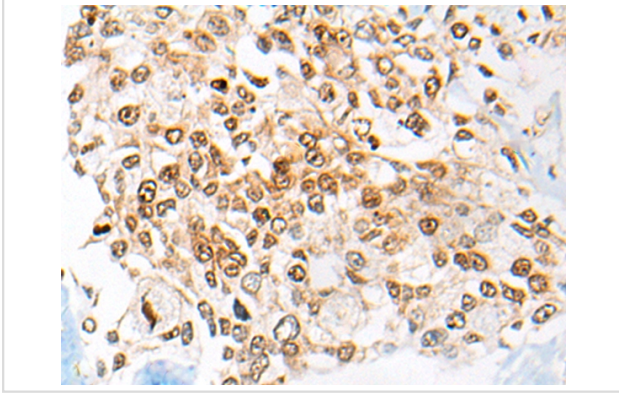
Images



Gel: 12%SDS-PAGE
 lysate: 40 B₂g, Lane: TM4 cell lysate,
 Primary antibody: 46481B₂CETN3 Antibody) at dilution
 1/650
 Secondary antibody: Goat anti rabbit IgG at 1/8000 dilution,
 Exposure time: 1 minute



The image on the left is immunohistochemistry of paraffin-embedded Human thyroid cancer tissue using 46481(CETN3 Antibody) at dilution 1/45, on the right is treated with fusion protein. (Original magnification: x200)



The image on the left is immunohistochemistry of paraffin-embedded Human prostate cancer tissue using 46481(CETN3 Antibody) at dilution 1/45, on the right is treated with fusion protein. (Original magnification: x200)

Background

The protein encoded by this gene contains four EF-hand calcium binding domains, and is a member of the centrin protein family. Centrins are evolutionarily conserved proteins similar to the CDC31 protein of *S. cerevisiae*. Yeast CDC31 is located at the centrosome of interphase and mitotic cells, where it plays a fundamental role in centrosome duplication and separation. Multiple forms of the proteins similar to the yeast centrin have been identified in human and other mammalian cells, some of which have been shown to be associated with centrosome fractions. This protein appears to be one of the most abundant centrins associated with centrosome, which suggests a similar function to its yeast counterpart. Alternatively spliced transcript variants encoding different isoforms have been found for this gene.

Note: This product is for in vitro research use only