

CXCL12 Polyclonal Antibody

Catalog No: #29143

Package Size: #29143-1 50ul #29143-2 100ul

Orders: order@signalwayantibody.com

Support: tech@signalwayantibody.com

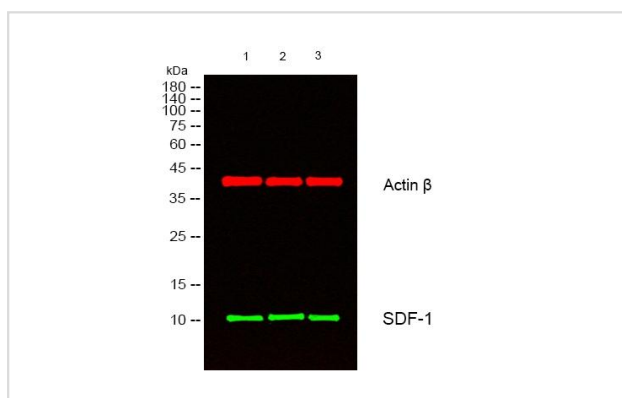
Description

Product Name	CXCL12 Polyclonal Antibody
Host Species	Rabbit
Clonality	Polyclonal
Isotype	IgG
Purification	The antibody was affinity-purified from rabbit antiserum by affinity-chromatography using epitope-specific immunogen.
Applications	WB,IHC,IF
Species Reactivity	Human,Mouse,Rat
Immunogen Description	The antiserum was produced against synthesized peptide derived from human CXCL12.
Other Names	CXCL12;IRH;PBSF;SCYB12;SDF1;TLSF;TPAR1
Accession No.	GeneID:6387Swiss Prot:P48061
Uniprot	P48061
GeneID	6387;
Calculated MW	10-20kD
SDS-PAGE MW	18kDa
Formulation	Liquid in PBS containing 50% glycerol, 0.5% BSA and 0.02% sodium azide.
Storage	Store at -20 Λ C/1 year

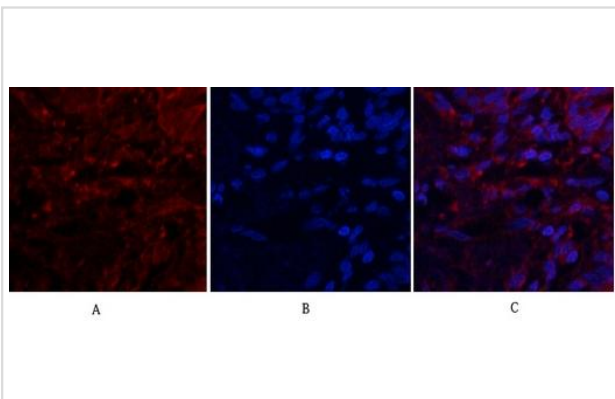
Application Details

IF 1:50-200 WB 1:500 - 1:2000. IHC 1:100 - 1:300.

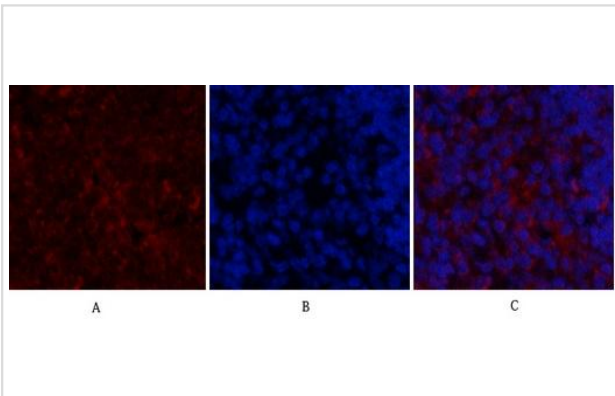
Images



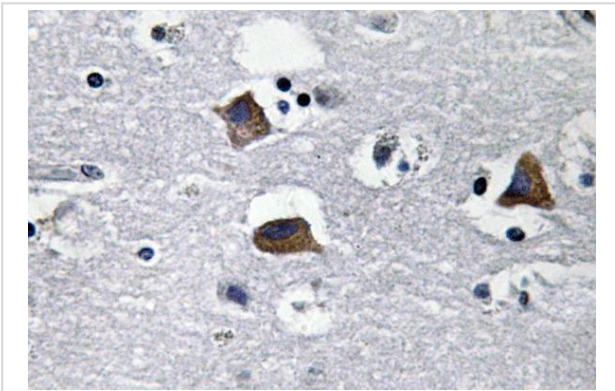
Western blot analysis of lysates from 1) KB, 2) HeLa, 3) MCF-7 cells, (Green) primary antibody was diluted at 1:1000, 4° over night, secondary antibody was diluted at 1:10000, 37° 1hour. (Red) Actin β Monoclonal Antibody(5B7) antibody was diluted at 1:5000 as loading control, 4° over night, secondary antibody was diluted at 1:10000, 37° 1hour.



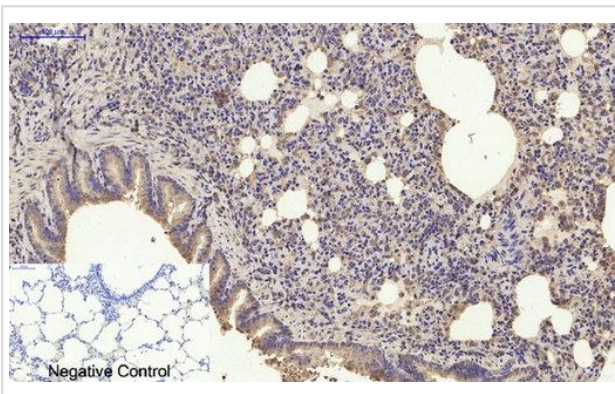
Immunofluorescence analysis of human-lung tissue. 1, CXCL12 Polyclonal Antibody (red) was diluted at 1:200 (4°C, overnight). 2, Cy3 labeled Secondary antibody was diluted at 1:300 (room temperature, 50 min). 3, Picture B: DAPI (blue) 10 min. Picture A: Target. Picture B: DAPI. Picture C: merge of A+B



Immunofluorescence analysis of rat-spleen tissue. 1, CXCL12 Polyclonal Antibody (red) was diluted at 1:200 (4°C, overnight). 2, Cy3 labeled Secondary antibody was diluted at 1:300 (room temperature, 50 min). 3, Picture B: DAPI (blue) 10 min. Picture A: Target. Picture B: DAPI. Picture C: merge of A+B



Immunohistochemistry analysis of CXCL12 antibody in paraffin-embedded human brain tissue.



Immunohistochemical analysis of paraffin-embedded Rat-lung tissue. 1, CXCL12 Polyclonal Antibody was diluted at 1:200 (4°C, overnight). 2, Sodium citrate pH 6.0 was used for antibody retrieval (>98°C, 20 min). 3, Secondary antibody was diluted at 1:200 (room temperature, 30 min). Negative control was used by secondary antibody only.

Background

C-X-C motif chemokine ligand 12 (CXCL12) Homo sapiens This antimicrobial gene encodes a stromal cell-derived alpha chemokine member of the intercrine family. The encoded protein functions as the ligand for the G-protein coupled receptor, chemokine (C-X-C motif) receptor 4, and plays a role in many diverse cellular functions, including embryogenesis, immune surveillance, inflammation response, tissue homeostasis, and tumor growth and metastasis. Mutations in this gene are associated with resistance to human immunodeficiency virus type 1 infections. Multiple transcript variants encoding different isoforms have been found for this gene. [provided by RefSeq, Sep 2014],

Note: This product is for in vitro research use only