

DCN Polyclonal Antibody

Catalog No: #29199



Package Size: #29199-1 50ul #29199-2 100ul

Orders: order@signalwayantibody.com
Support: tech@signalwayantibody.com

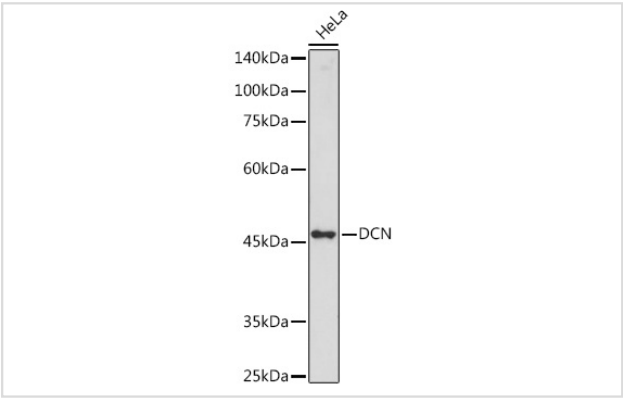
Description

Product Name	DCN Polyclonal Antibody
Host Species	Rabbit
Clonality	Polyclonal
Isotype	IgG
Purification	Affinity purification
Applications	WB,IF
Species Reactivity	Human,Mouse,Rat
Immunogen Description	Recombinant fusion protein of human DCN (NP_598010.1).
Other Names	DCN;CSCD;DSPG2;PG40;PGII;PGS2;SLRR1B;decorin;Decorin
Accession No.	Uniprot:P07585GenelD:1634
Uniprot	P07585
GenelD	1634
Calculated MW	8kDa/19kDa/23kDa/27kDa/39kDa
SDS-PAGE MW	45KDa/48KDa
Concentration	1.0mg/ml
Formulation	PBS with 0.02% sodium azide,50% glycerol,pH7.3.
Storage	Store at -20°C. Avoid freeze / thaw cycles.

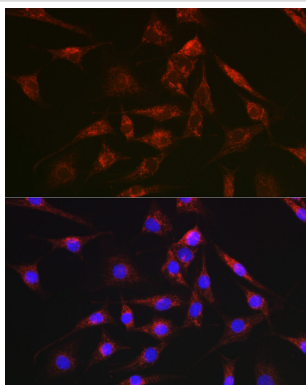
Application Details

WB 1:500 - 1:2000IF 1:50 - 1:100

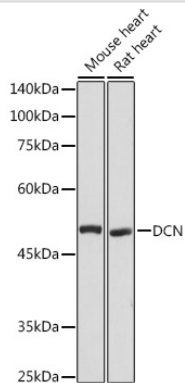
Images



Western blot analysis of extracts of HeLa cells, using DCN antibody.



Immunofluorescence analysis of NIH-3T3 cells using DCN Rabbit pAb.



Western blot analysis of extracts of various cell lines, using DCN antibody.

Background

This gene encodes a member of the small leucine-rich proteoglycan family of proteins. Alternative splicing results in multiple transcript variants, at least one of which encodes a preproprotein that is proteolytically processed to generate the mature protein. This protein plays a role in collagen fibril assembly. Binding of this protein to multiple cell surface receptors mediates its role in tumor suppression, including a stimulatory effect on autophagy and inflammation and an inhibitory effect on angiogenesis and tumorigenesis. This gene and the related gene biglycan are thought to be the result of a gene duplication. Mutations in this gene are associated with congenital stromal corneal dystrophy in human patients.

Note: This product is for in vitro research use only