

## CHIT1 Antibody

Catalog No: #46490

Orders: [order@signalwayantibody.com](mailto:order@signalwayantibody.com)Support: [tech@signalwayantibody.com](mailto:tech@signalwayantibody.com)

## Description

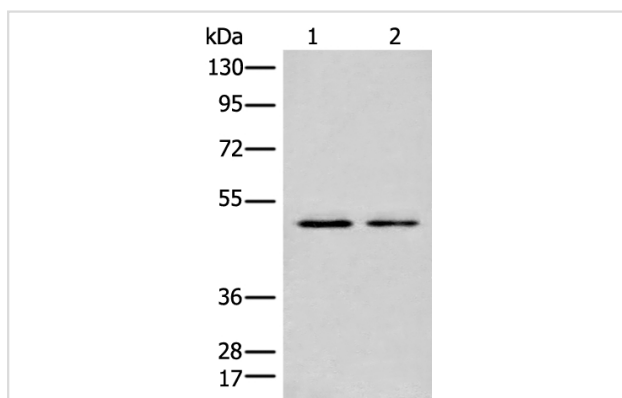
Product Name	CHIT1 Antibody
Host Species	Rabbit
Clonality	Polyclonal
Purification	Antigen affinity purification
Applications	WB IHC
Species Reactivity	Hu
Specificity	The antibody detects endogenous levels of total CHIT1 protein.
Immunogen Type	peptide
Immunogen Description	Synthetic protein corresponding to residues near the C terminal of human CHIT1
Target Name	CHIT1
Other Names	CHI3; CHIT; CHITD
Accession No.	Swiss-Prot:Q13231NCBI Gene ID:1118NCBI Protein:BC103695
Uniprot	Q13231
GeneID	1118;
Calculated MW	52 kDa
Concentration	0.8mg/ml
Formulation	Rabbit IgG in pH7.4 PBS, 0.05% NaN <sub>3</sub> , 40% Glycerol.
Storage	Store at -20°C

## Application Details

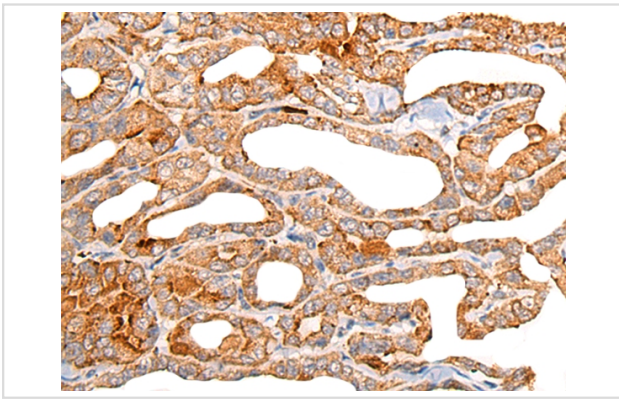
Western blotting: 1:200-1:1000

Immunohistochemistry: 1: 25-100

## Images



Gel: 8%SDS-PAGE  
lysate: 40 µg, Lane 1-2: Human lung tissue and Human spleen tissue lysates,  
Primary antibody: 46490B (CHIT1 Antibody) at dilution 1/350  
Secondary antibody: Goat anti rabbit IgG at 1/8000 dilution,  
Exposure time: 1 minute



The image on the left is immunohistochemistry of paraffin-embedded Human thyroid cancer tissue using 46490(CHIT1 Antibody) at dilution 1/30, on the right is treated with fusion protein. (Original magnification: x200)

## Background

Chitotriosidase is secreted by activated human macrophages and is markedly elevated in plasma of Gaucher disease patients. The expression of chitotriosidase occurs only at a late stage of differentiation of monocytes to activated macrophages in culture. Human macrophages can synthesize a functional chitotriosidase, a highly conserved enzyme with a strongly regulated expression. This enzyme may play a role in the degradation of chitin-containing pathogens. Several alternatively spliced transcript variants have been described for this gene.

Note: This product is for in vitro research use only