

## CHMP5 Antibody

Catalog No: #46492

Orders: [order@signalwayantibody.com](mailto:order@signalwayantibody.com)Support: [tech@signalwayantibody.com](mailto:tech@signalwayantibody.com)

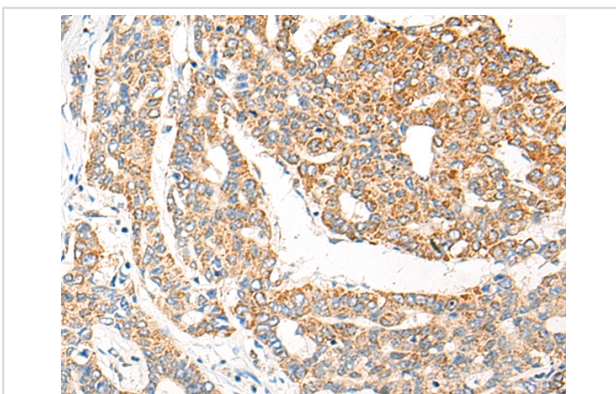
## Description

Product Name	CHMP5 Antibody
Host Species	Rabbit
Clonality	Polyclonal
Purification	Antigen affinity purification
Applications	IHC
Species Reactivity	Hu
Specificity	The antibody detects endogenous levels of total CHMP5 protein.
Immunogen Type	peptide
Immunogen Description	Full length fusion protein of human CHMP5
Target Name	CHMP5
Other Names	Vps60; CGI-34; PNAS-2; C9orf83; HSPC177; SNF7DC2
Accession No.	Swiss-Prot:Q9NZZ3NCBI Gene ID:51510NCBI Protein:BC007457
Uniprot	Q9NZZ3
GeneID	51510;
Concentration	0.6mg/ml
Formulation	Rabbit IgG in pH7.4 PBS, 0.05% NaN <sub>3</sub> , 40% Glycerol.
Storage	Store at -20°C

## Application Details

Immunohistochemistry: 1: 25-100

## Images



The image on the left is immunohistochemistry of paraffin-embedded Human liver cancer tissue using 46492(CHMP5 Antibody) at dilution 1/20, on the right is treated with fusion protein. (Original magnification: x200)

## Background

CHMP5 belongs to the chromatin-modifying protein/charged multivesicular body protein (CHMP) family. These proteins are components of ESCRT-III (endosomal sorting complex required for transport III), a complex involved in degradation of surface receptor proteins and formation of endocytic multivesicular bodies (MVBs). Some CHMPs have both nuclear and cytoplasmic/vesicular distributions, and one such CHMP, CHMP1A (MIM 164010), is required for both MVB formation and regulation of cell cycle progression (Tsang et al., 2006 [PubMed 16730941]).

---

Note: This product is for in vitro research use only