

## CHRD Antibody

Catalog No: #46495

Orders: order@signalwayantibody.com

Support: tech@signalwayantibody.com

## Description

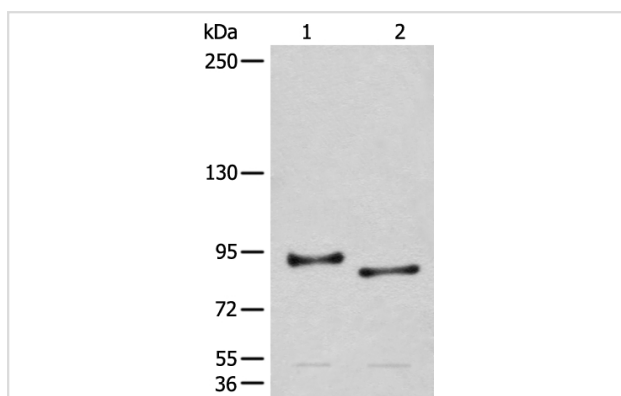
Product Name	CHRD Antibody
Host Species	Rabbit
Clonality	Polyclonal
Purification	Antigen affinity purification
Applications	WB IHC
Species Reactivity	Hu
Specificity	The antibody detects endogenous levels of total CHRD protein.
Immunogen Type	peptide
Immunogen Description	Synthetic protein corresponding to residues near the C terminal of human CHRD
Target Name	CHRD
Accession No.	Swiss-Prot:Q9H2X0NCBI Gene ID:8646NCBI Protein:BC112345
Uniprot	Q9H2X0
GeneID	8646;
Calculated MW	102 kDa
Concentration	0.7mg/ml
Formulation	Rabbit IgG in pH7.4 PBS, 0.05% NaN <sub>3</sub> , 40% Glycerol.
Storage	Store at -20°C

## Application Details

Western blotting: 1:200-1:1000

Immunohistochemistry: 1: 25-100

## Images

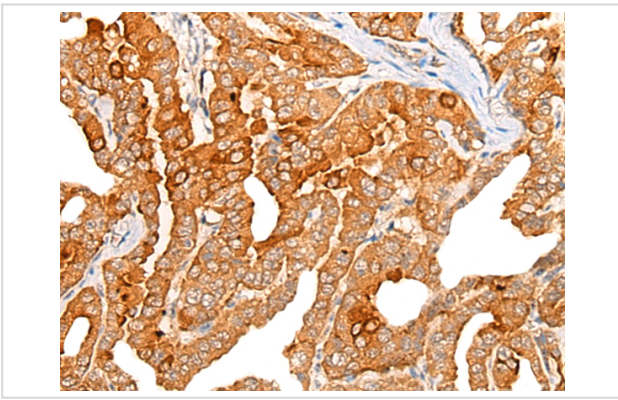


Gel: 6%SDS-PAGE

lysate: 40 µg, Lane 1-2: Human cerebrum tissue and Mouse brain tissue lysates,

Primary antibody: 46495B (CHRD Antibody) at dilution 1/250

Secondary antibody: Goat anti rabbit IgG at 1/8000 dilution, Exposure time: 1 minute



The image on the left is immunohistochemistry of paraffin-embedded Human thyroid cancer tissue using 46495(CHRD Antibody) at dilution 1/25, on the right is treated with fusion protein. (Original magnification: x200)

## Background

This gene encodes a secreted protein that dorsalizes early vertebrate embryonic tissues by binding to ventralizing TGF-beta-like bone morphogenetic proteins and sequestering them in latent complexes. The encoded protein may also have roles in organogenesis and during adulthood. It has been suggested that this gene could be a candidate gene for Cornelia de Lange syndrome. Reduced expression of this gene results in enhanced bone regeneration. Alternative splicing results in multiple transcript variants. Other alternative splice variants have been described but their full length sequence has not been determined.

Note: This product is for in vitro research use only