

CHURC1 Antibody

Catalog No: #46499

Orders: order@signalwayantibody.comSupport: tech@signalwayantibody.com

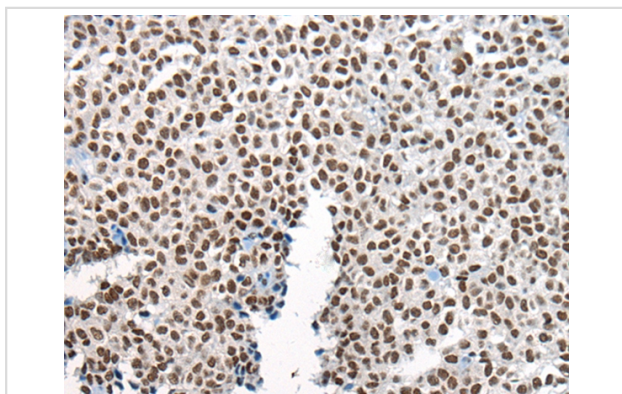
Description

Product Name	CHURC1 Antibody
Host Species	Rabbit
Clonality	Polyclonal
Purification	Antigen affinity purification
Applications	IHC
Species Reactivity	Hu
Specificity	The antibody detects endogenous levels of total CHURC1 protein.
Immunogen Type	peptide
Immunogen Description	Synthetic peptide corresponding to internal residues of human CHURC1
Target Name	CHURC1
Other Names	chch; My015; C14orf52
Accession No.	Swiss-Prot:Q8WUH1 NCBI Gene ID:91612NCBI Protein:NP_001190992
Uniprot	Q8WUH1
GeneID	91612;
Concentration	1mg/ml
Formulation	Rabbit IgG in pH7.4 PBS, 0.05% NaN ₃ , 40% Glycerol.
Storage	Store at -20°C

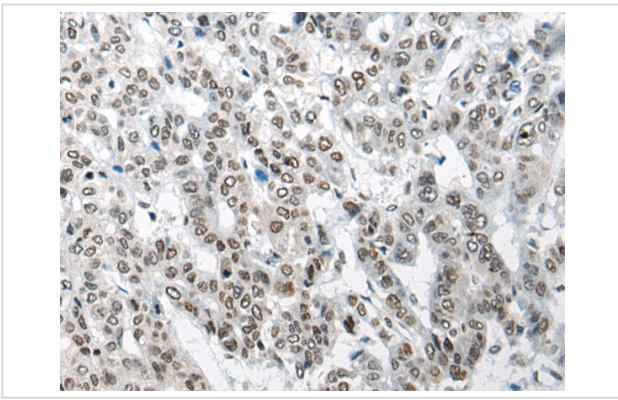
Application Details

Immunohistochemistry: 1: 25-100

Images



The image on the left is immunohistochemistry of paraffin-embedded Human ovarian cancer tissue using 46499(CHURC1 Antibody) at dilution 1/25, on the right is treated with synthetic peptide. (Original magnification: x200)



The image on the left is immunohistochemistry of paraffin-embedded Human liver cancer tissue using 46499(CHURC1 Antibody) at dilution 1/25, on the right is treated with synthetic peptide. (Original magnification: x200)

Background

CHURC1, also known as protein Churchill, is a 112 amino acid protein that plays a critical role in neural induction during embryogenesis. The fibroblast growth family of proteins (FGFs) has been identified as necessary factors in mesoderm formation and neural induction. CHURC1, a putative zinc finger protein, is a transcriptional activator that mediates FGF signaling. Furthermore, CHURC1 is thought to play a role in the regulation of cell movement. Although CHURC1 does not bind to DNA, it functions as a transcriptional regulator and a protein-interaction factor. Two isoforms of CHURC1 exist as a result of alternative splicing events.

Note: This product is for in vitro research use only