

CINP Antibody

Catalog No: #46501

Orders: order@signalwayantibody.comSupport: tech@signalwayantibody.com

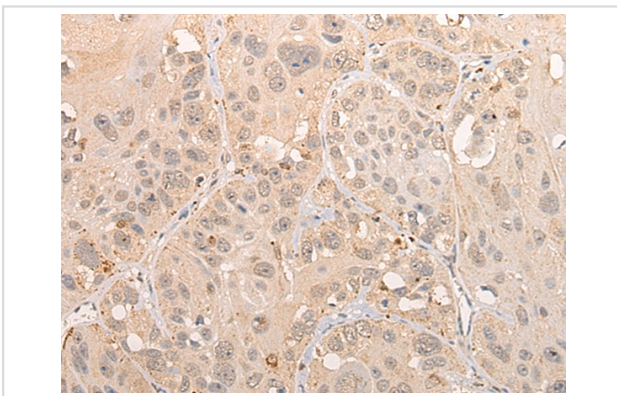
Description

Product Name	CINP Antibody
Host Species	Rabbit
Clonality	Polyclonal
Purification	Antigen affinity purification
Applications	IHC
Species Reactivity	Hu
Specificity	The antibody detects endogenous levels of total CINP protein.
Immunogen Type	peptide
Immunogen Description	Full length fusion protein of human CINP
Target Name	CINP
Accession No.	Swiss-Prot:Q9BW66NCBI Gene ID:51550NCBI Protein:BC000600
Uniprot	Q9BW66
GeneID	51550;
Concentration	0.7mg/ml
Formulation	Rabbit IgG in pH7.4 PBS, 0.05% NaN ₃ , 40% Glycerol.
Storage	Store at -20°C

Application Details

Immunohistochemistry: 1: 25-100

Images



The image on the left is immunohistochemistry of paraffin-embedded Human esophagus cancer tissue using 46501(CINP Antibody) at dilution 1/20, on the right is treated with fusion protein. (Original magnification: x200)

Background

The protein encoded by this gene is reported to be a component of the DNA replication complex as well as a genome-maintenance protein. It may interact with proteins important for replication initiation and has been shown to bind chromatin at the G1 phase of the cell cycle and dissociate from chromatin with replication initiation. It may also serve to regulate checkpoint signaling as part of the DNA damage response. Alternative splicing results in multiple transcript variants.

Note: This product is for in vitro research use only