

CIR1 Antibody

Catalog No: #46502

Orders: order@signalwayantibody.comSupport: tech@signalwayantibody.com

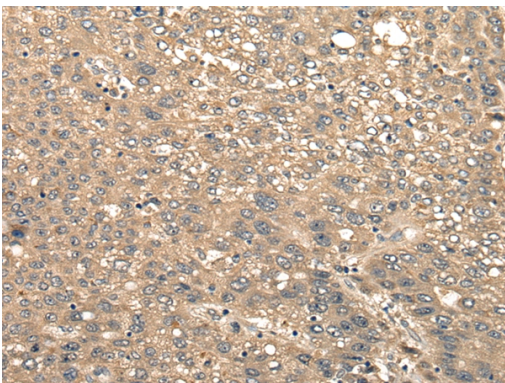
Description

Product Name	CIR1 Antibody
Host Species	Rabbit
Clonality	Polyclonal
Purification	Antigen affinity purification
Applications	IHC
Species Reactivity	Hu
Specificity	The antibody detects endogenous levels of total CIR1 protein.
Immunogen Type	peptide
Immunogen Description	Synthetic peptide corresponding to residues near the C terminal of human CIR1
Target Name	CIR1
Other Names	CIR
Accession No.	Swiss-Prot:Q86X95 NCBI Gene ID:9541NCBI Protein:NP_004873
Uniprot	Q86X95
GeneID	9541;
Concentration	1.5mg/ml
Formulation	Rabbit IgG in pH7.4 PBS, 0.05% NaN ₃ , 40% Glycerol.
Storage	Store at -20°C

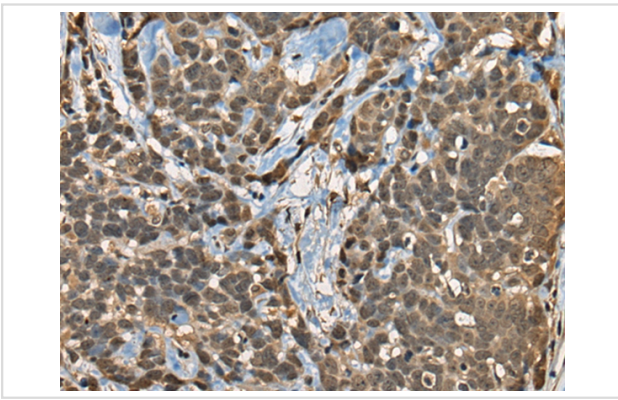
Application Details

Immunohistochemistry: 1: 30-150

Images



The image on the left is immunohistochemistry of paraffin-embedded Human liver cancer tissue using 46502(CIR1 Antibody) at dilution 1/40, on the right is treated with synthetic peptide. (Original magnification: x200)



The image on the left is immunohistochemistry of paraffin-embedded Human thyroid cancer tissue using 46502(CIR1 Antibody) at dilution 1/40, on the right is treated with synthetic peptide. (Original magnification: x200)

Background

May modulate splice site selection during alternative splicing of pre-mRNAs (By similarity). Regulates transcription and acts as corepressor for RBPJ. Recruits RBPJ to the Sin3-histone deacetylase complex (HDAC). Required for RBPJ-mediated repression of transcription.

Note: This product is for in vitro research use only