

CITED2 Antibody

Catalog No: #46505

Orders: order@signalwayantibody.comSupport: tech@signalwayantibody.com

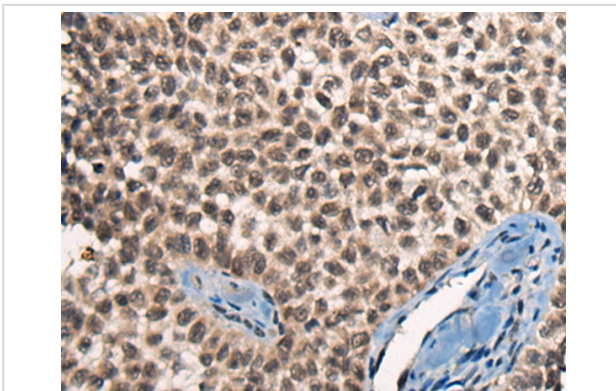
Description

Product Name	CITED2 Antibody
Host Species	Rabbit
Clonality	Polyclonal
Purification	Antigen affinity purification
Applications	IHC
Species Reactivity	Hu Ms
Specificity	The antibody detects endogenous levels of total CITED2 protein.
Immunogen Type	peptide
Immunogen Description	Synthetic peptide corresponding to residues near the N terminal of human CITED2
Target Name	CITED2
Other Names	ASD8; MRG1; VSD2; MRG-1; P35SRJ
Accession No.	Swiss-Prot:Q99967 NCBI Gene ID:10370NCBI Protein:NP_006070
Uniprot	Q99967
GeneID	10370;
Concentration	1.9mg/ml
Formulation	Rabbit IgG in pH7.4 PBS, 0.05% NaN ₃ , 40% Glycerol.
Storage	Store at -20°C

Application Details

Immunohistochemistry: 1: 40-200

Images



The image on the left is immunohistochemistry of paraffin-embedded Human ovarian cancer tissue using 46505(CITED2 Antibody) at dilution 1/50, on the right is treated with synthetic peptide. (Original magnification: x200)

Background

The protein encoded by this gene inhibits transactivation of HIF1A-induced genes by competing with binding of hypoxia-inducible factor 1-alpha to p300-CH1. Mutations in this gene are a cause of cardiac septal defects. Alternatively spliced transcript variants encoding multiple isoforms have been observed for this gene.

Note: This product is for in vitro research use only