

CKS1B Antibody

Catalog No: #46507

Orders: order@signalwayantibody.comSupport: tech@signalwayantibody.com

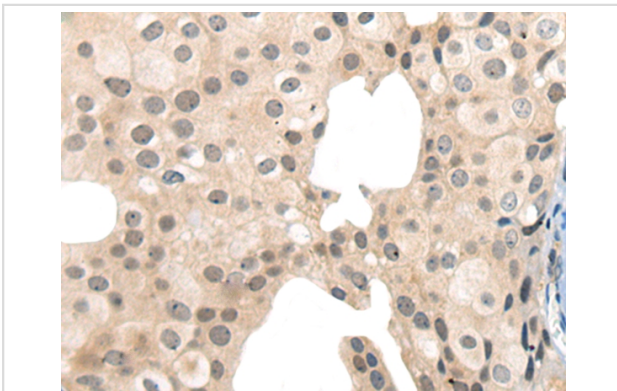
Description

| | |
|-----------------------|--|
| Product Name | CKS1B Antibody |
| Host Species | Rabbit |
| Clonality | Polyclonal |
| Purification | Antigen affinity purification |
| Applications | IHC |
| Species Reactivity | Hu Ms |
| Specificity | The antibody detects endogenous levels of total CKS1B protein. |
| Immunogen Type | peptide |
| Immunogen Description | Synthetic peptide corresponding to residues near the N terminal of human CKS1B |
| Target Name | CKS1B |
| Other Names | CKS1; ckshs1; PNAS-16; PNAS-18 |
| Accession No. | Swiss-Prot:P61024 NCBI Gene ID:1163NCBI Protein:NP_001817 |
| Uniprot | P61024 |
| GeneID | 1163; |
| Concentration | 1.2mg/ml |
| Formulation | Rabbit IgG in pH7.4 PBS, 0.05% NaN ₃ , 40% Glycerol. |
| Storage | Store at -20°C |

Application Details

Immunohistochemistry: 1: 20-100

Images



The image on the left is immunohistochemistry of paraffin-embedded Human breast cancer tissue using 46507(CKS1B Antibody) at dilution 1/30, on the right is treated with synthetic peptide. (Original magnification: x200)

Background

CKS1B protein binds to the catalytic subunit of the cyclin dependent kinases and is essential for their biological function. The CKS1B mRNA is found to be expressed in different patterns through the cell cycle in HeLa cells, which reflects a specialized role for the encoded protein. At least two transcript variants have been identified for this gene, and it appears that only one of them encodes a protein.

Note: This product is for in vitro research use only