

HSP90B(Phospho-Ser254) Antibody

Catalog No: #11196

Package Size: #11196-1 50ul #11196-2 100ul

Orders: order@signalwayantibody.com

Support: tech@signalwayantibody.com

Description

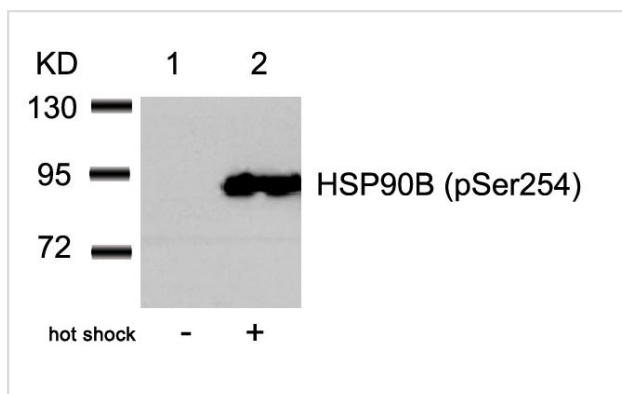
Product Name	HSP90B(Phospho-Ser254) Antibody
Host Species	Rabbit
Clonality	Polyclonal
Purification	Antibodies were produced by immunizing rabbits with synthetic phosphopeptide and KLH conjugates. Antibodies were purified by affinity-chromatography using epitope-specific phosphopeptide. Non-phospho specific antibodies were removed by chromatography using non-phosphopeptide.
Applications	WB
Species Reactivity	Hu Ms
Specificity	The antibody detects endogenous level of HSP90B only when phosphorylated at serine 254.
Immunogen Type	Peptide-KLH
Immunogen Description	Peptide sequence around phosphorylation site of serine 254 (V-G-S(p)-D-E) derived from Human HSP90B.
Target Name	HSP90B
Modification	Phospho
Other Names	HS90B; HSP 84; HSP90-beta; HSP90AB1; HSPC2
Accession No.	Swiss-Prot: P08238NCBI Protein: NP_031381.2
Uniprot	P08238
GeneID	3326;
Concentration	1.0mg/ml
Formulation	Supplied at 1.0mg/mL in phosphate buffered saline (without Mg ²⁺ and Ca ²⁺), pH 7.4, 150mM NaCl, 0.02% sodium azide and 50% glycerol.
Storage	Store at -20°C for long term preservation (recommended). Store at 4°C for short term use.

Application Details

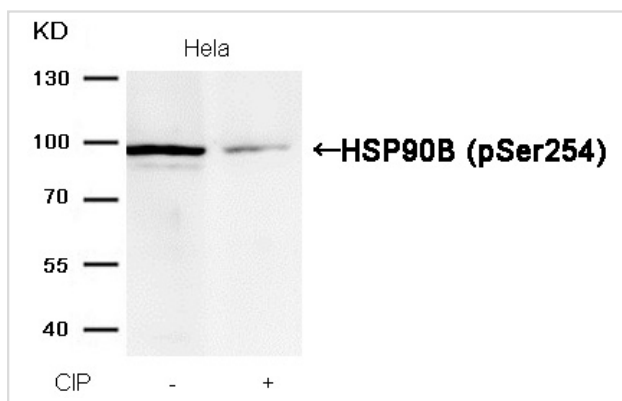
Predicted MW: 92kd

Western blotting: 1:500~1:1000

Images



Western blot analysis of extracts from HeLa cells untreated (lane 1) or treated with hot shock (lane 2) using HSP90B(Phospho-Ser254) Antibody #11196.



Western blot analysis of extracts from HeLa cells, treated with calf intestinal phosphatase (CIP), using HSP90B (Phospho-Ser254) Antibody #11196.

Background

Molecular chaperone. Has ATPase activity.

Zhao R, Houry WA. (2007) *Adv Exp Med Biol*; 594: 27-36.

Olsen JV, et al. (2006) *Cell*; 127(3): 635-648

Ogiso H, et al. (2004) *Biochemistry*; 43(49): 15510-15519

Note: This product is for in vitro research use only