

CLASP2 Antibody

Catalog No: #46510

Orders: order@signalwayantibody.comSupport: tech@signalwayantibody.com

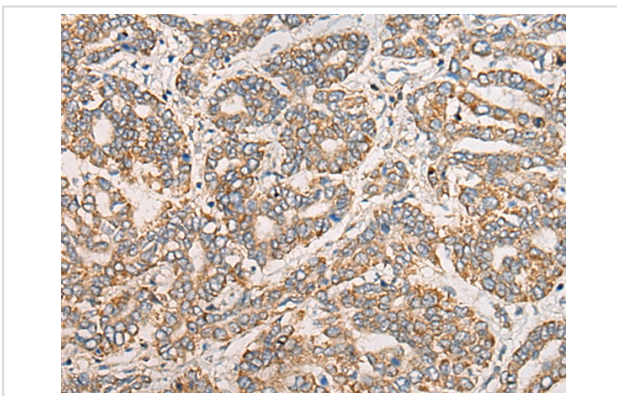
Description

Product Name	CLASP2 Antibody
Host Species	Rabbit
Clonality	Polyclonal
Purification	Antigen affinity purification
Applications	IHC
Species Reactivity	Hu
Specificity	The antibody detects endogenous levels of total CLASP2 protein.
Immunogen Type	peptide
Immunogen Description	Synthetic protein corresponding to residues near the C terminal of human CLASP2
Target Name	CLASP2
Accession No.	Swiss-Prot:O75122NCBI Gene ID:23122NCBI Protein:BC029035
Uniprot	O75122
GeneID	23122;
Concentration	0.6mg/ml
Formulation	Rabbit IgG in pH7.4 PBS, 0.05% NaN ₃ , 40% Glycerol.
Storage	Store at -20°C

Application Details

Immunohistochemistry: 1: 25-100

Images



The image on the left is immunohistochemistry of paraffin-embedded Human liver cancer tissue using 46510(CLASP2 Antibody) at dilution 1/20, on the right is treated with fusion protein. (Original magnification: x200)

Background

CLASP2 (cytoplasmic linker associated protein 2), also known as KIAA0627 or hOrbit2, is a 1,294 amino acid protein that contains five HEAT repeats and localizes to the cytoplasm and the cytoskeleton, as well as to the kinetochore and the golgi apparatus. Expressed primarily in brain tissue, CLASP2 functions as a microtubule plus-end tracking protein that regulates the stability of dynamic microtubules and is required for the proper polarization of cytoplasmic microtubule arrays in migrating cells. CLASP2 interacts with EB1, EB3, ELKS and CLIP-115 and, in addition to stabilizing microtubules, plays an important role in maintaining the stability of the kinetochore and is crucial for proper chromosomal alignment. CLASP2 is

subject to phosphorylation by GSK-3 β , an event that is thought to negatively regulate the ability of CLASP2 to bind to microtubules. Two isoforms of CLASP2, designated beta and gamma, exist due to alternative splicing events.

Note: This product is for in vitro research use only