

CLPP Antibody

Catalog No: #46516

Orders: order@signalwayantibody.com

Support: tech@signalwayantibody.com

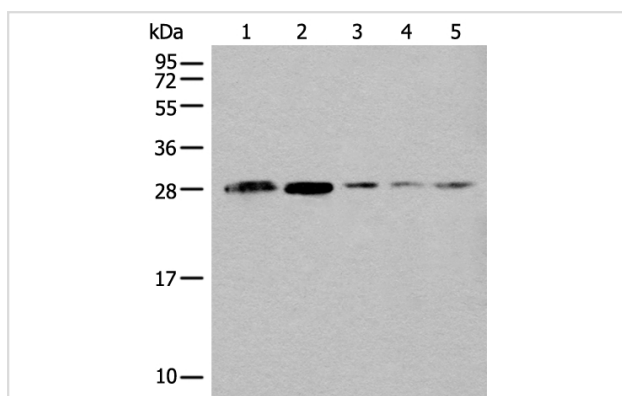
Description

Product Name	CLPP Antibody
Host Species	Rabbit
Clonality	Polyclonal
Purification	Antigen affinity purification
Applications	WB
Species Reactivity	Hu Ms
Specificity	The antibody detects endogenous levels of total CLPP protein.
Immunogen Type	peptide
Immunogen Description	Synthetic peptide corresponding to residues near the N terminal of human CLPP
Target Name	CLPP
Other Names	DFNB81; PRLTS3
Accession No.	Swiss-Prot:Q16740NCBI Gene ID:8192NCBI Protein:NP_006003
Uniprot	Q16740
GeneID	8192;
Calculated MW	30 kDa
Concentration	0.6mg/ml
Formulation	Rabbit IgG in pH7.4 PBS, 0.05% NaN ₃ , 40% Glycerol.
Storage	Store at -20°C

Application Details

Western blotting: 1:200-1:1000

Images



Gel: 12%SDS-PAGE
 , Lysate: 40 B μ g, Lane 1-5: Human heart tissue, A431, HeLa, A549 and HEPG2 cell lysates,
 Primary antibody: 46516(CLPP Antibody) at dilution 1/200,
 Secondary antibody: Goat anti rabbit IgG at 1/8000 dilution,
 Exposure time: 10 seconds

Background

The protein encoded by this gene belongs to the peptidase family S14 and hydrolyzes proteins into small peptides in the presence of ATP and magnesium. The protein is transported into mitochondrial matrix and is associated with the inner mitochondrial membrane.

Note: This product is for in vitro research use only