

CNGA3 Antibody

Catalog No: #46521

Orders: order@signalwayantibody.comSupport: tech@signalwayantibody.com

Description

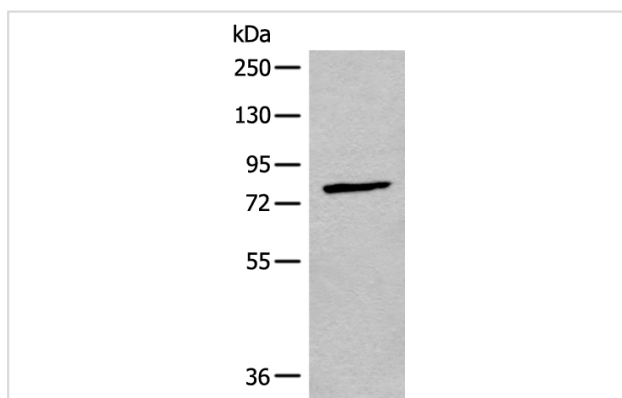
| | |
|-----------------------|--|
| Product Name | CNGA3 Antibody |
| Host Species | Rabbit |
| Clonality | Polyclonal |
| Purification | Antigen affinity purification |
| Applications | WB IHC |
| Species Reactivity | Hu |
| Specificity | The antibody detects endogenous levels of total CNGA3 protein. |
| Immunogen Type | peptide |
| Immunogen Description | Synthetic peptide corresponding to residues near the C terminal of human CNGA3 |
| Target Name | CNGA3 |
| Other Names | CNG3; ACHM2; CCNC1; CCNCa; CNGG3; CCNCalpha |
| Accession No. | Swiss-Prot:Q16281NCBI Gene ID:1261NCBI Protein:NP_001289 |
| Uniprot | Q16281 |
| GeneID | 1261; |
| Calculated MW | 79 kDa |
| Concentration | 0.9mg/ml |
| Formulation | Rabbit IgG in pH7.4 PBS, 0.05% NaN ₃ , 40% Glycerol. |
| Storage | Store at -20°C |

Application Details

Western blotting: 1:200-1:1000

Immunohistochemistry: 1: 10-50

Images

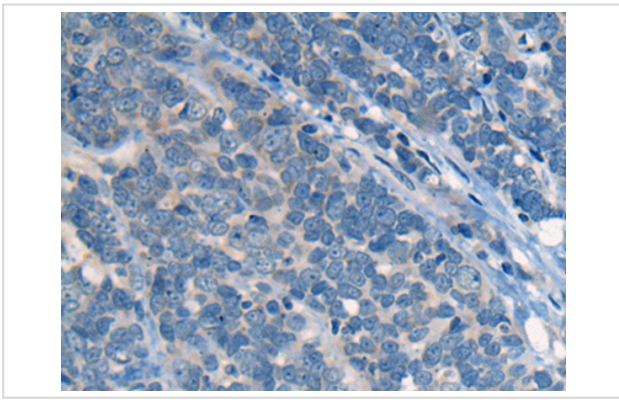


Gel: 6%SDS-PAGE

lysate: 40 µg, Lane: 293T cell lysate,

Primary antibody: 46521 (CNGA3 Antibody) at dilution 1/300

Secondary antibody: Goat anti rabbit IgG at 1/8000 dilution,
Exposure time: 1 minute



The image on the left is immunohistochemistry of paraffin-embedded Human thyroid cancer tissue using 46521 (CNGA3 Antibody) at dilution 1/25, on the right is treated with synthetic peptide. (Original magnification: x200)

Background

This gene encodes a member of the cyclic nucleotide-gated cation channel protein family which is required for normal vision and olfactory signal transduction. Mutations in this gene are associated with achromatopsia (rod monochromacy) and color blindness. Two alternatively spliced transcripts encoding different isoforms have been described.

Note: This product is for in vitro research use only