

## CNN1 Antibody

Catalog No: #46523

Orders: [order@signalwayantibody.com](mailto:order@signalwayantibody.com)Support: [tech@signalwayantibody.com](mailto:tech@signalwayantibody.com)

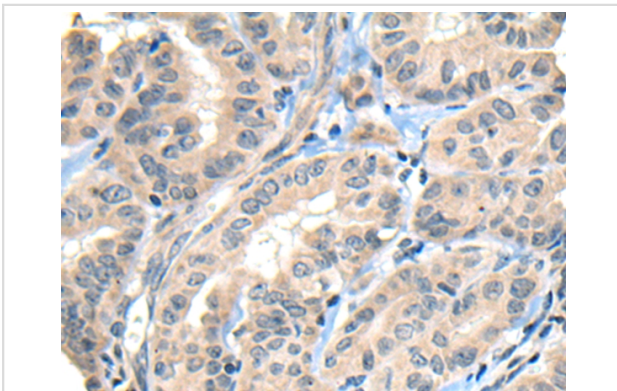
## Description

Product Name	CNN1 Antibody
Host Species	Rabbit
Clonality	Polyclonal
Purification	Antigen affinity purification
Applications	IHC
Species Reactivity	Hu
Specificity	The antibody detects endogenous levels of total CNN1 protein.
Immunogen Type	peptide
Immunogen Description	Full length fusion protein of human CNN1
Target Name	CNN1
Other Names	SMCC; Sm-Calp; HEL-S-14
Accession No.	Swiss-Prot:P51911NCBI Gene ID:1264NCBI Protein:BC022015
Uniprot	P51911
GeneID	1264;
Concentration	3.8mg/ml
Formulation	Rabbit IgG in pH7.4 PBS, 0.05% NaN <sub>3</sub> , 40% Glycerol.
Storage	Store at -20°C

## Application Details

Immunohistochemistry: 1: 30-150

## Images



The image is immunohistochemistry of paraffin-embedded Human thyroid cancer tissue using 46523(CNN1 Antibody) at dilution 1/30. (Original magnification: x200)

## Background

Thin filament-associated protein that is implicated in the regulation and modulation of smooth muscle contraction. It is capable of binding to actin, calmodulin, troponin C and tropomyosin. The interaction of calponin with actin inhibits the actomyosin Mg-ATPase activity (By similarity).

---

Note: This product is for in vitro research use only