

CNTLN Antibody

Catalog No: #46526

Orders: order@signalwayantibody.com

Support: tech@signalwayantibody.com

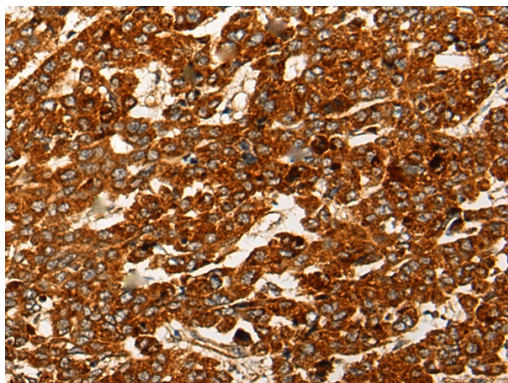
Description

Product Name	CNTLN Antibody
Host Species	Rabbit
Clonality	Polyclonal
Purification	Antigen affinity purification
Applications	IHC
Species Reactivity	Hu
Specificity	The antibody detects endogenous levels of total CNTLN protein.
Immunogen Type	peptide
Immunogen Description	Synthetic peptide corresponding to internal residues of human CNTLN
Target Name	CNTLN
Other Names	C9orf39; C9orf101; bA340N12.1
Accession No.	Swiss-Prot:Q9NXG0NCBI Gene ID:54875NCBI Protein:NP_060208
Uniprot	Q9NXG0
GeneID	54875;
Concentration	0.8mg/ml
Formulation	Rabbit IgG in pH7.4 PBS, 0.05% NaN ₃ , 40% Glycerol.
Storage	Store at -20°C

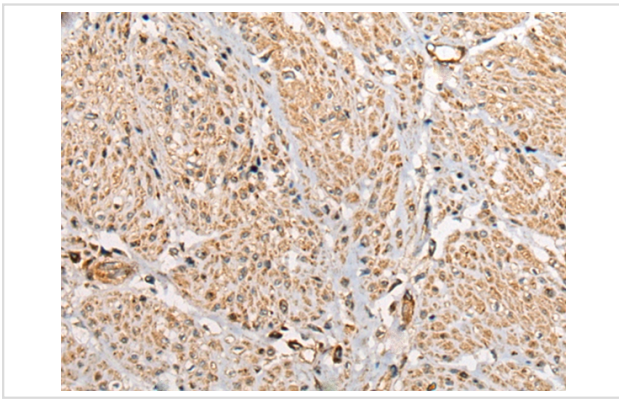
Application Details

Immunohistochemistry: 1: 25-100

Images



The image on the left is immunohistochemistry of paraffin-embedded Human liver cancer tissue using 46526(CNTLN Antibody) at dilution 1/25, on the right is treated with synthetic peptide. (Original magnification: x200)



The image on the left is immunohistochemistry of paraffin-embedded Human prostate cancer tissue using 46526(CNTLN Antibody) at dilution 1/25, on the right is treated with synthetic peptide. (Original magnification: x200)

Background

Required for centrosome cohesion and recruitment of CEP68 to centrosomes.

Note: This product is for in vitro research use only