

## CNTN5 Antibody

Catalog No: #46527

Orders: order@signalwayantibody.com

Support: tech@signalwayantibody.com

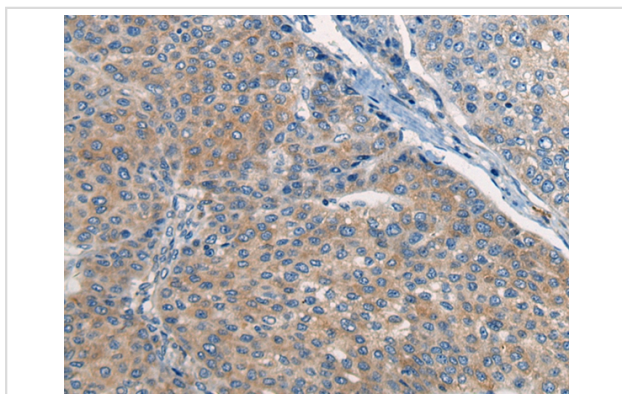
## Description

Product Name	CNTN5 Antibody
Host Species	Rabbit
Clonality	Polyclonal
Purification	Antigen affinity purification
Applications	IHC
Species Reactivity	Hu Ms Rt
Specificity	The antibody detects endogenous levels of total CNTN5 protein.
Immunogen Type	peptide
Immunogen Description	Synthetic peptide corresponding to internal residues of human CNTN5
Target Name	CNTN5
Other Names	NB-2; HNB-2s
Accession No.	Swiss-Prot:O94779NCBI Gene ID:53942NCBI Protein:NP_055176
Uniprot	O94779
GeneID	53942;
Concentration	1.4mg/ml
Formulation	Rabbit IgG in pH7.4 PBS, 0.05% NaN <sub>3</sub> , 40% Glycerol.
Storage	Store at -20°C

## Application Details

Immunohistochemistry: 1: 25-100

## Images



The image on the left is immunohistochemistry of paraffin-embedded Human liver cancer tissue using 46527(CNTN5 Antibody) at dilution 1/35, on the right is treated with synthetic peptide. (Original magnification: x200)

## Background

The protein encoded by this gene is a member of the immunoglobulin superfamily, and contactin family, which mediate cell surface interactions during nervous system development. This protein is a glycosylphosphatidylinositol (GPI)-anchored neuronal membrane protein that functions as a cell adhesion molecule. It may play a role in the formation of axon connections in the developing nervous system. Alternatively spliced transcript variants encoding different isoforms have been described for this gene.

---

Note: This product is for in vitro research use only