

COL11A1 Antibody

Catalog No: #46531

Orders: order@signalwayantibody.comSupport: tech@signalwayantibody.com

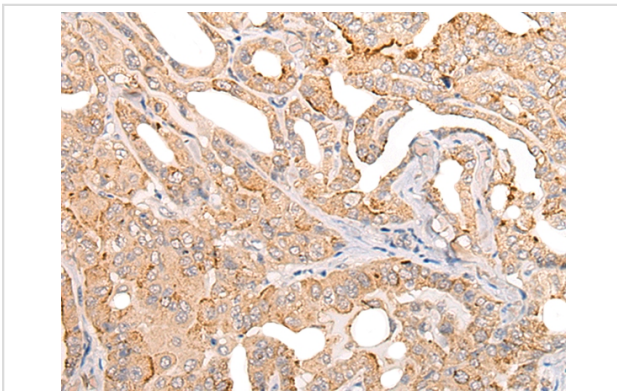
Description

Product Name	COL11A1 Antibody
Host Species	Rabbit
Clonality	Polyclonal
Purification	Antigen affinity purification
Applications	IHC
Species Reactivity	Hu
Specificity	The antibody detects endogenous levels of total COL11A1 protein.
Immunogen Type	peptide
Immunogen Description	Synthetic protein corresponding to internal residues of human COL11A1
Target Name	COL11A1
Other Names	STL2; COLL6; CO11A1
Accession No.	Swiss-Prot:P12107NCBI Gene ID:1301NCBI Protein:BC117697
Uniprot	P12107
GeneID	1301;
Concentration	0.8mg/ml
Formulation	Rabbit IgG in pH7.4 PBS, 0.05% NaN ₃ , 40% Glycerol.
Storage	Store at -20°C

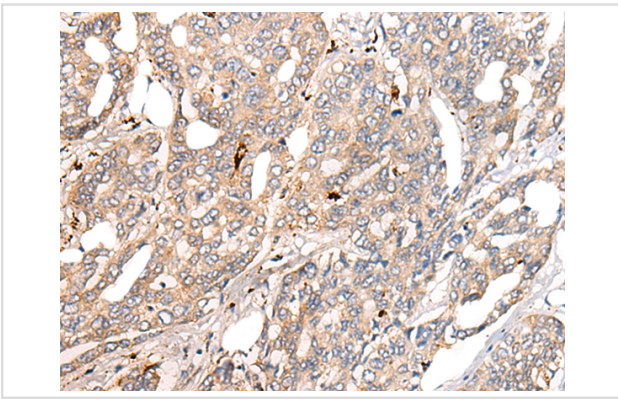
Application Details

Immunohistochemistry: 1: 25-100

Images



The image on the left is immunohistochemistry of paraffin-embedded Human thyroid cancer tissue using 46531(COL11A1 Antibody) at dilution 1/25, on the right is treated with fusion protein. (Original magnification: x200)



The image on the left is immunohistochemistry of paraffin-embedded Human liver cancer tissue using 46531(COL11A1 Antibody) at dilution 1/25, on the right is treated with fusion protein. (Original magnification: x200)

Background

This gene encodes one of the two alpha chains of type XI collagen, a minor fibrillar collagen. Type XI collagen is a heterotrimer but the third alpha chain is a post-translationally modified alpha 1 type II chain. Mutations in this gene are associated with type II Stickler syndrome and with Marshall syndrome. A single-nucleotide polymorphism in this gene is also associated with susceptibility to lumbar disc herniation. Multiple transcript variants have been identified for this gene.

Note: This product is for in vitro research use only