

COL5A2 Antibody

Catalog No: #46533

Orders: order@signalwayantibody.comSupport: tech@signalwayantibody.com

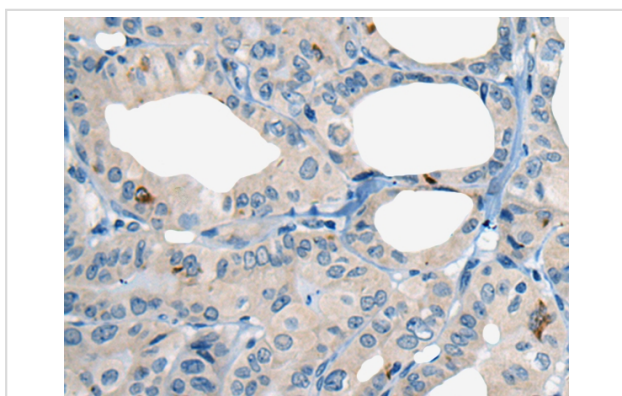
Description

Product Name	COL5A2 Antibody
Host Species	Rabbit
Clonality	Polyclonal
Purification	Antigen affinity purification
Applications	IHC
Species Reactivity	Hu Ms
Specificity	The antibody detects endogenous levels of total COL5A2 protein.
Immunogen Type	peptide
Immunogen Description	Synthetic peptide corresponding to internal residues of human COL5A2
Target Name	COL5A2
Other Names	EDSC
Accession No.	Swiss-Prot:P05997 NCBI Gene ID:1290NCBI Protein:NP_000384
Uniprot	P05997
GeneID	1290;
Concentration	0.8mg/ml
Formulation	Rabbit IgG in pH7.4 PBS, 0.05% NaN ₃ , 40% Glycerol.
Storage	Store at -20°C

Application Details

Immunohistochemistry: 1: 20-100

Images



The image on the left is immunohistochemistry of paraffin-embedded Human thyroid cancer tissue using 46533(COL5A2 Antibody) at dilution 1/20, on the right is treated with synthetic peptide. (Original magnification: x200)

Background

This gene encodes an alpha chain for one of the low abundance fibrillar collagens. Fibrillar collagen molecules are trimers that can be composed of one or more types of alpha chains. Type V collagen is found in tissues containing type I collagen and appears to regulate the assembly of heterotypic fibers composed of both type I and type V collagen. This gene product is closely related to type XI collagen and it is possible that the collagen chains of types V and XI constitute a single collagen type with tissue-specific chain combinations. Mutations in this gene are associated with Ehlers-Danlos

syndrome, types I and II.

Note: This product is for in vitro research use only