

COL9A1 Antibody

Catalog No: #46534

Orders: order@signalwayantibody.comSupport: tech@signalwayantibody.com

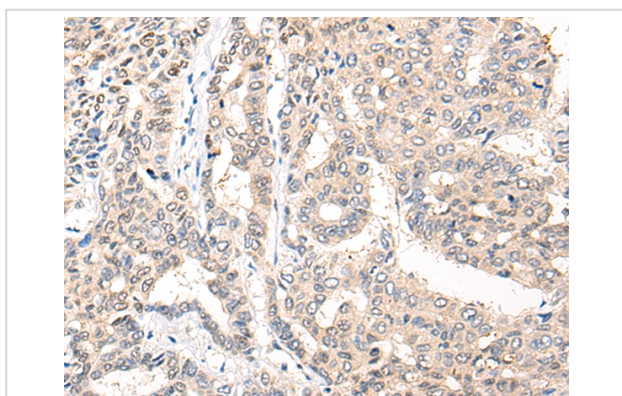
Description

Product Name	COL9A1 Antibody
Host Species	Rabbit
Clonality	Polyclonal
Purification	Antigen affinity purification
Applications	IHC
Species Reactivity	Hu
Specificity	The antibody detects endogenous levels of total COL9A1 protein.
Immunogen Type	peptide
Immunogen Description	Synthetic protein corresponding to residues near the N terminal of human COL9A1
Target Name	COL9A1
Other Names	MED; EDM6; STL4; DJ149L1.1.2
Accession No.	Swiss-Prot:P20849NCBI Gene ID:1297NCBI Protein:BC015409
Uniprot	P20849
GeneID	1297;
Concentration	0.5mg/ml
Formulation	Rabbit IgG in pH7.4 PBS, 0.05% NaN ₃ , 40% Glycerol.
Storage	Store at -20°C

Application Details

Immunohistochemistry: 1: 25-100

Images



The image on the left is immunohistochemistry of paraffin-embedded Human liver cancer tissue using 46534(COL9A1 Antibody) at dilution 1/20, on the right is treated with fusion protein. (Original magnification: x200)

Background

This gene encodes one of the three alpha chains of type IX collagen, which is a minor (5-20%) collagen component of hyaline cartilage. Type IX collagen is usually found in tissues containing type II collagen, a fibrillar collagen. Studies in knockout mice have shown that synthesis of the alpha 1 chain is essential for assembly of type IX collagen molecules, a heterotrimeric molecule, and that lack of type IX collagen is associated with early onset osteoarthritis. Mutations in this gene are associated with osteoarthritis in humans, with multiple epiphyseal dysplasia, 6, a form of

chondrodysplasia, and with Stickler syndrome, a disease characterized by ophthalmic, orofacial, articular, and auditory defects. Two transcript variants that encode different isoforms have been identified for this gene.?

Note: This product is for in vitro research use only