

CORO1A Antibody

Catalog No: #46536

Orders: order@signalwayantibody.com

Support: tech@signalwayantibody.com

Description

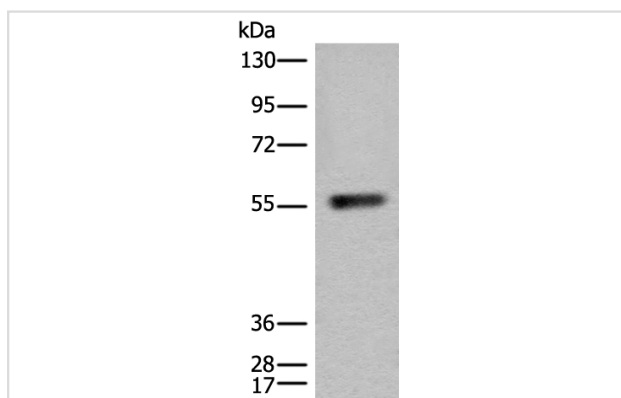
Product Name	CORO1A Antibody
Host Species	Rabbit
Clonality	Polyclonal
Purification	Antigen affinity purification
Applications	WB IHC
Species Reactivity	Hu
Specificity	The antibody detects endogenous levels of total CORO1A protein.
Immunogen Type	peptide
Immunogen Description	Synthetic peptide corresponding to residues near the C terminal of human CORO1A
Target Name	CORO1A
Other Names	p57; IMD8; TACO; CLABP; HCORO1; CLIPINA
Accession No.	Swiss-Prot:P31146NCBI Gene ID:11151NCBI Protein:NP_009005
Uniprot	P31146
GeneID	11151;
Calculated MW	51 kDa
Concentration	0.9mg/ml
Formulation	Rabbit IgG in pH7.4 PBS, 0.05% NaN ₃ , 40% Glycerol.
Storage	Store at -20°C

Application Details

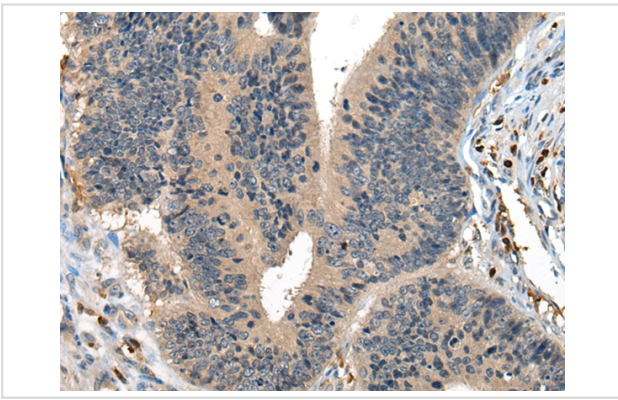
Western blotting: 1:200-1:1000

Immunohistochemistry: 1: 25-100

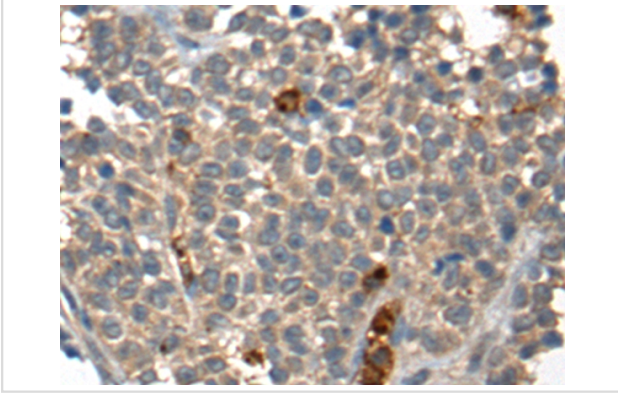
Images



Gel: 8%SDS-PAGE
lysate: 40 µg, Lane: Jurkat cell lysate,
Primary antibody: 46536 (CORO1A Antibody) at dilution 1/200
Secondary antibody: Goat anti rabbit IgG at 1/8000 dilution,
Exposure time: 2 minutes



The image on the left is immunohistochemistry of paraffin-embedded Human colorectal cancer tissue using 46536(CORO1A Antibody) at dilution 1/25, on the right is treated with synthetic peptide. (Original magnification: x200)



The image on the left is immunohistochemistry of paraffin-embedded Human ovarian cancer tissue using 46536(CORO1A Antibody) at dilution 1/25, on the right is treated with synthetic peptide. (Original magnification: x200)

Background

This gene encodes a member of the WD repeat protein family. WD repeats are minimally conserved regions of approximately 40 amino acids typically bracketed by gly-his and trp-asp (GH-WD), which may facilitate formation of heterotrimeric or multiprotein complexes. Members of this family are involved in a variety of cellular processes, including cell cycle progression, signal transduction, apoptosis, and gene regulation. Alternative splicing results in multiple transcript variants. A related pseudogene has been defined on chromosome 16.

Note: This product is for in vitro research use only