

CORO1B Antibody

Catalog No: #46537

Orders: order@signalwayantibody.comSupport: tech@signalwayantibody.com

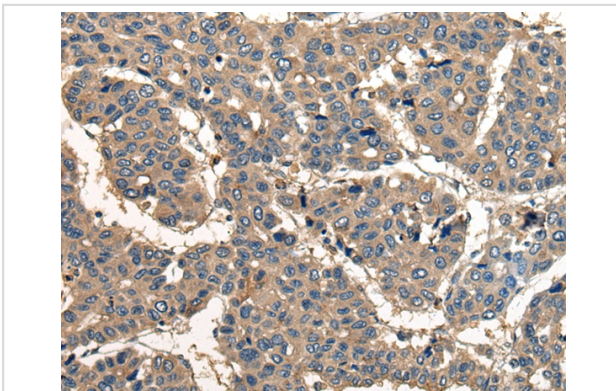
Description

Product Name	CORO1B Antibody
Host Species	Rabbit
Clonality	Polyclonal
Purification	Antigen affinity purification
Applications	IHC
Species Reactivity	Hu
Specificity	The antibody detects endogenous levels of total CORO1B protein.
Immunogen Type	peptide
Immunogen Description	Synthetic peptide corresponding to residues near the C terminal of human CORO1B
Target Name	CORO1B
Other Names	CORONIN-2
Accession No.	Swiss-Prot:Q9BR76 NCBI Gene ID:57175NCBI Protein:NP_065174
Uniprot	Q9BR76
GeneID	57175;
Concentration	1.5mg/ml
Formulation	Rabbit IgG in pH7.4 PBS, 0.05% NaN ₃ , 40% Glycerol.
Storage	Store at -20°C

Application Details

Immunohistochemistry: 1: 30-150

Images



The image on the left is immunohistochemistry of paraffin-embedded Human liver cancer tissue using 46537(CORO1B Antibody) at dilution 1/40, on the right is treated with synthetic peptide. (Original magnification: x200)

Background

Members of the coronin family, such as CORO1B, are WD repeat-containing actin-binding proteins that regulate cell motility (Cai et al., 2005 [PubMed 16027158]). Regulates leading edge dynamics and cell motility in fibroblasts. May be involved in cytokinesis and signal transduction (By similarity).

Note: This product is for in vitro research use only