

CP Antibody

Catalog No: #46543

Orders: order@signalwayantibody.com

Support: tech@signalwayantibody.com

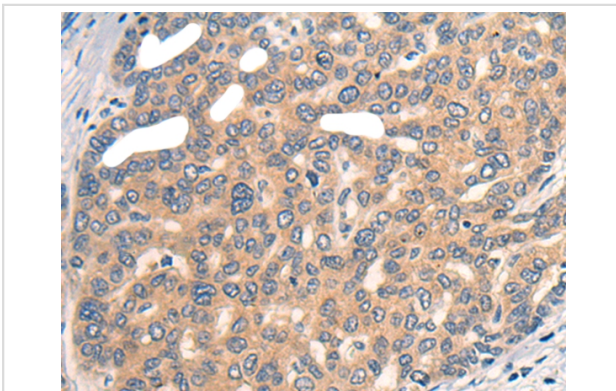
Description

Product Name	CP Antibody
Host Species	Rabbit
Clonality	Polyclonal
Purification	Antigen affinity purification
Applications	IHC
Species Reactivity	Hu
Specificity	The antibody detects endogenous levels of total CP protein.
Immunogen Type	peptide
Immunogen Description	Synthetic peptide corresponding to internal residues of human CP
Target Name	CP
Other Names	CP-2
Accession No.	Swiss-Prot:P00450 NCBI Gene ID:1356NCBI Protein:NP_000087
Uniprot	P00450
GeneID	1356;
Concentration	1.3mg/ml
Formulation	Rabbit IgG in pH7.4 PBS, 0.05% NaN ₃ , 40% Glycerol.
Storage	Store at -20°C

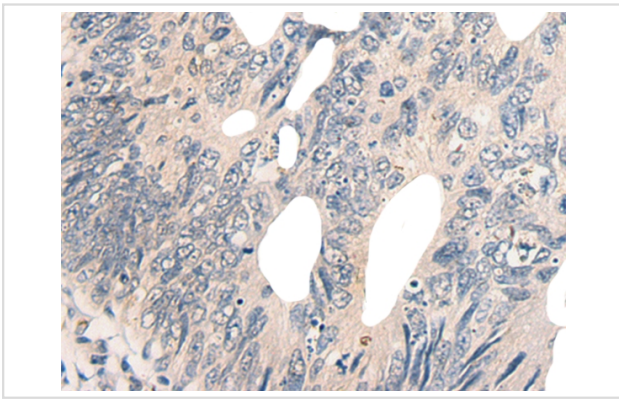
Application Details

Immunohistochemistry: 1: 25-100

Images



The image on the left is immunohistochemistry of paraffin-embedded Human liver cancer tissue using 46543(CP Antibody) at dilution 1/25, on the right is treated with synthetic peptide. (Original magnification: x200)



The image on the left is immunohistochemistry of paraffin-embedded Human colorectal cancer tissue using 46543(CP Antibody) at dilution 1/25, on the right is treated with synthetic peptide. (Original magnification: x200)

Background

The protein encoded by this gene is a metalloprotein that binds most of the copper in plasma and is involved in the peroxidation of Fe(II)transferrin to Fe(III) transferrin. Mutations in this gene cause aceruloplasminemia, which results in iron accumulation and tissue damage, and is associated with diabetes and neurologic abnormalities. Two transcript variants, one protein-coding and the other not protein-coding, have been found for this gene.

Note: This product is for in vitro research use only