

CPD Antibody

Catalog No: #46544

Orders: order@signalwayantibody.comSupport: tech@signalwayantibody.com

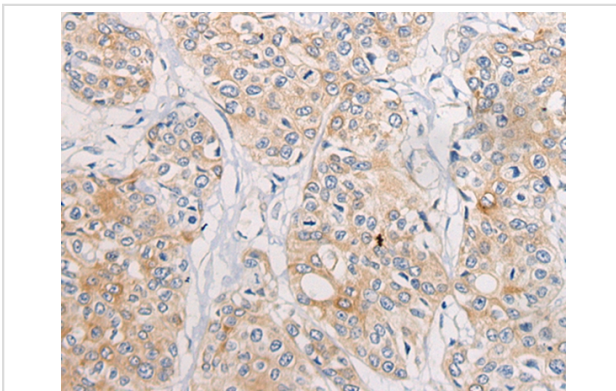
Description

Product Name	CPD Antibody
Host Species	Rabbit
Clonality	Polyclonal
Purification	Antigen affinity purification
Applications	IHC
Species Reactivity	Hu
Specificity	The antibody detects endogenous levels of total CPD protein.
Immunogen Type	peptide
Immunogen Description	Synthetic peptide corresponding to internal residues of human CPD
Target Name	CPD
Other Names	GP180
Accession No.	Swiss-Prot:O75976 NCBI Gene ID:1362NCBI Protein:NP_001295
Uniprot	O75976
GeneID	1362;
Concentration	1.7mg/ml
Formulation	Rabbit IgG in pH7.4 PBS, 0.05% NaN ₃ , 40% Glycerol.
Storage	Store at -20°C

Application Details

Immunohistochemistry: 1: 40-200

Images



The image on the left is immunohistochemistry of paraffin-embedded Human prostate cancer tissue using 46544(CPD Antibody) at dilution 1/70, on the right is treated with synthetic peptide. (Original magnification: x200)

Background

The metalloprotease family of enzymes is divided into 2 subfamilies based on sequence similarities. The pancreatic carboxypeptidase-like and the regulatory B-type carboxypeptidase subfamilies. Carboxypeptidase D has been identified as a regulatory B-type carboxypeptidase. CPD is a homolog of duck gp180, a hepatitis B virus-binding protein. Transcript variants utilizing alternative polyadenylation signals exist for this gene.

Note: This product is for in vitro research use only