

CPM Antibody

Catalog No: #46545

Orders: order@signalwayantibody.com

Support: tech@signalwayantibody.com

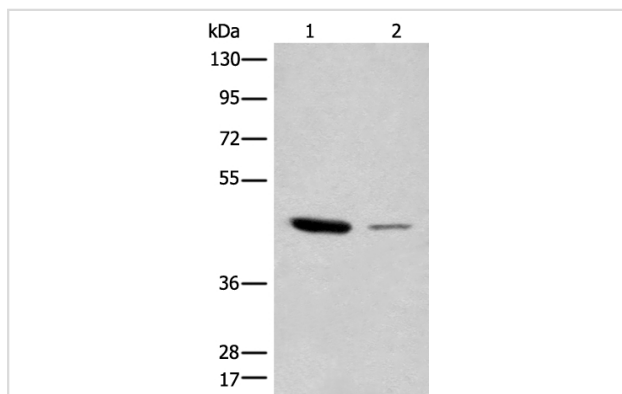
Description

Product Name	CPM Antibody
Host Species	Rabbit
Clonality	Polyclonal
Purification	Antigen affinity purification
Applications	WB
Species Reactivity	Hu
Specificity	The antibody detects endogenous levels of total CPM protein.
Immunogen Type	peptide
Immunogen Description	Synthetic protein corresponding to residues near the C terminal of human CPM
Target Name	CPM
Accession No.	Swiss-Prot:P14384NCBI Gene ID:1368NCBI Protein:BC022276
Uniprot	P14384
GeneID	1368;
Calculated MW	51 kDa
Concentration	0.5mg/ml
Formulation	Rabbit IgG in pH7.4 PBS, 0.05% NaN ₃ , 40% Glycerol.
Storage	Store at -20°C

Application Details

Western blotting: 1:200-1:1000

Images



Gel: 8%SDS-PAGE

lysate: 40 µg, Lane 1-2: 293T and HT-29 cell lysates,
Primary antibody: 46545B CPM Antibody) at dilution 1/200

Secondary antibody: Goat anti rabbit IgG at 1/8000 dilution,

Exposure time: 10 seconds

Background

The protein encoded by this gene is a membrane-bound arginine/lysine carboxypeptidase. Its expression is associated with monocyte to macrophage differentiation. This encoded protein contains hydrophobic regions at the amino and carboxy termini and has 6 potential asparagine-linked glycosylation sites. The active site residues of carboxypeptidases A and B are conserved in this protein. Three alternatively spliced transcript variants encoding the same protein have been described for this gene.

Note: This product is for in vitro research use only