

## CCR8 Antibody

Catalog No: #24057

Orders: [order@signalwayantibody.com](mailto:order@signalwayantibody.com)Support: [tech@signalwayantibody.com](mailto:tech@signalwayantibody.com)

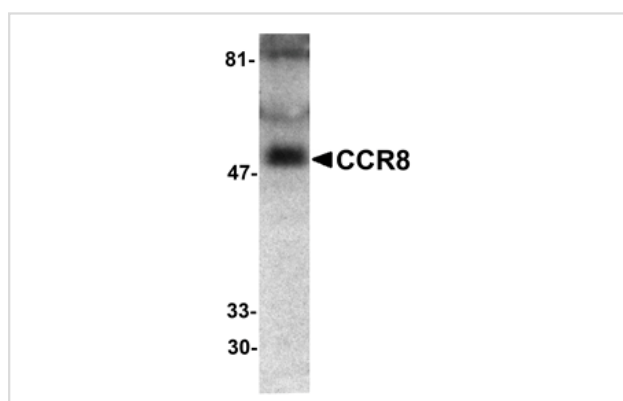
## Description

Product Name	CCR8 Antibody
Host Species	Rabbit
Clonality	Polyclonal
Purification	Affinity chromatography purified via peptide column
Applications	ELISA WB
Species Reactivity	Hu
Immunogen Type	Peptide
Immunogen Description	Raised against a peptide corresponding to amino acids 183 to 201 of human CCR8, which locate in. The second extracellular loop.
Target Name	CCR8
Accession No.	U45983
Uniprot	U45983
Concentration	1mg/ml
Formulation	Supplied in PBS containing 0.02% sodium azide.
Storage	Can be stored at -20°C, stable for one year. As with all antibodies care should be taken to avoid repeated freeze thaw cycles. Antibodies should not be exposed to prolonged high temperatures.

## Application Details

Predicted MW: 50 kd

## Images



Western blot analysis of CCR8 in human spleen lysate with CCR8 antibody at 1:500 dilution.

## Background

CCR8 is one of the chemokine receptors that are required as coreceptors for HIV infection. The genes encoding human and murine CCR8 were cloned and designated TER1, CKR-L1, and ChemR1. The encoded seven transmembrane protein was identified as the receptor for human CC chemokine I-309 and renamed CCR8. Recently, CCR8 was found to serve as a coreceptor for diverse T-cell tropic, dual-tropic and macrophage-tropic HIV-1 strains. CCR8 mediates CC chemokine I-309 induced monocyte chemoattraction and HIV-1 envelope fusion and virus infection, which can be prevented by the CCR8 ligand I-309. CCR8 is expressed in spleen, thymus and T lymphoblastic cell lines.

---

Note: This product is for in vitro research use only