

## DNASE1L2 Antibody

Catalog No: #46554

Orders: [order@signalwayantibody.com](mailto:order@signalwayantibody.com)Support: [tech@signalwayantibody.com](mailto:tech@signalwayantibody.com)

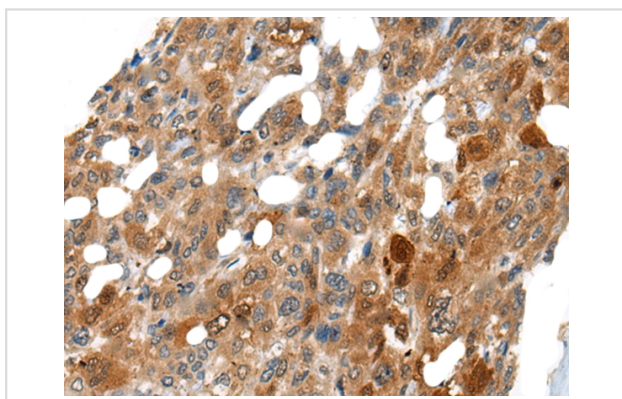
## Description

Product Name	DNASE1L2 Antibody
Host Species	Rabbit
Clonality	Polyclonal
Purification	Antigen affinity purification
Applications	IHC
Species Reactivity	Hu
Specificity	The antibody detects endogenous levels of total DNASE1L2 protein.
Immunogen Description	Synthetic peptide corresponding to internal residues of human DNASE1L2
Target Name	DNASE1L2
Other Names	DNAS1L2
Accession No.	Swiss-Prot:Q92874 NCBI Gene ID:1775NCBI Protein:NP_001365
Uniprot	Q92874
GeneID	1775;
Concentration	0.5mg/ml
Formulation	Rabbit IgG in pH7.4 PBS, 0.05% NaN <sub>3</sub> , 40% Glycerol.
Storage	Store at -20°C

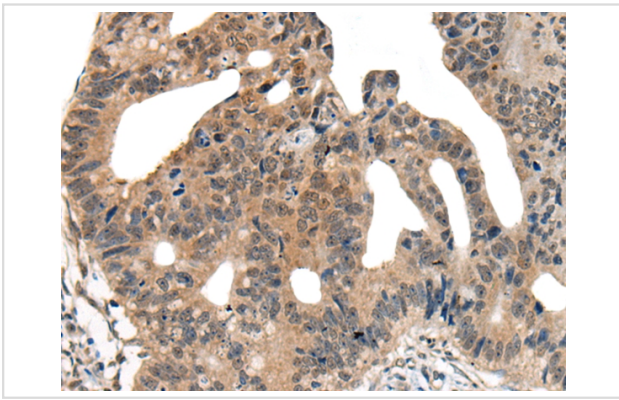
## Application Details

Immunohistochemistry: 1: 25-100

## Images



The image on the left is immunohistochemistry of paraffin-embedded Human liver cancer tissue using 46554(DNASE1L2 Antibody) at dilution 1/30, on the right is treated with synthetic peptide. (Original magnification: x200)



The image on the left is immunohistochemistry of paraffin-embedded Human colorectal cancer tissue using 46554(DNASE1L2 Antibody) at dilution 1/30, on the right is treated with synthetic peptide. (Original magnification: x200)

## Background

Divalent cation-dependent acid DNA endonuclease involved in the breakdown of the nucleus during cornecocyte formation of epidermal keratinocytes. May play an immune role by eliminating harmful DNA released into the extracellular environment by damaged epidermal cells.

Note: This product is for in vitro research use only