

EDEM2 Antibody

Catalog No: #46557

Orders: order@signalwayantibody.comSupport: tech@signalwayantibody.com

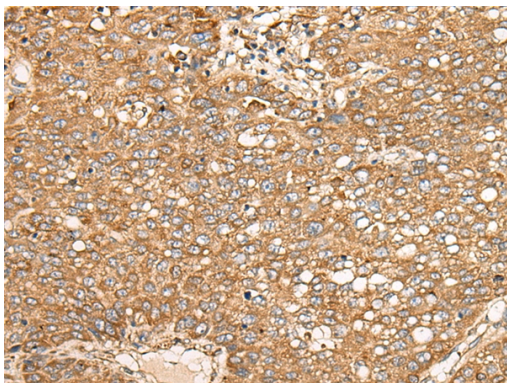
Description

Product Name	EDEM2 Antibody
Host Species	Rabbit
Clonality	Polyclonal
Purification	Antigen affinity purification
Applications	IHC
Species Reactivity	Hu
Specificity	The antibody detects endogenous levels of total EDEM2 protein.
Immunogen Type	peptide
Immunogen Description	Synthetic protein corresponding to residues near the C terminal of human EDEM2
Target Name	EDEM2
Other Names	C20orf31; C20orf49; bA4204.1
Accession No.	Swiss-Prot:Q9BV94NCBI Gene ID:55741NCBI Protein:BC001371
Uniprot	Q9BV94
GeneID	55741;
Concentration	0.7mg/ml
Formulation	Rabbit IgG in pH7.4 PBS, 0.05% NaN ₃ , 40% Glycerol.
Storage	Store at -20°C

Application Details

Immunohistochemistry: 1: 25-100

Images



The image on the left is immunohistochemistry of paraffin-embedded Human liver cancer tissue using 46557(EDEM2 Antibody) at dilution 1/30, on the right is treated with fusion protein. (Original magnification: x200)

Background

In the endoplasmic reticulum (ER), misfolded proteins are retrotranslocated to the cytosol and degraded by the proteasome in a process known as ER-associated degradation (ERAD). EDEM2 belongs to a family of proteins involved in ERAD of glycoproteins (Mast et al., 2005 [PubMed 15537790]).

Note: This product is for in vitro research use only