

## TRPA1 Rabbit Polyclonal Antibody

Catalog No: #29224

Package Size: #29224-1 50ul #29224-2 100ul

Orders: [order@signalwayantibody.com](mailto:order@signalwayantibody.com)Support: [tech@signalwayantibody.com](mailto:tech@signalwayantibody.com)

## Description

Product Name	TRPA1 Rabbit Polyclonal Antibody
Host Species	Rabbit
Clonality	Polyclonal
Isotype	IgG
Purification	Affinity purification
Applications	WB,IHC,IF
Species Reactivity	Human,Mouse,Rat
Immunogen Description	A synthetic peptide of human TRPA1 (NP_015628.2).
Other Names	TRPA1;ANKTM1;FEPS
Accession No.	Swiss-Prot#:O75762NCBI Gene ID:8989
Uniprot	O75762
GeneID	8989;
Calculated MW	127kDa
Formulation	PBS with 0.02% sodium azide,50% glycerol,pH7.3.
Storage	Store at -20°C. Avoid freeze / thaw cycles.

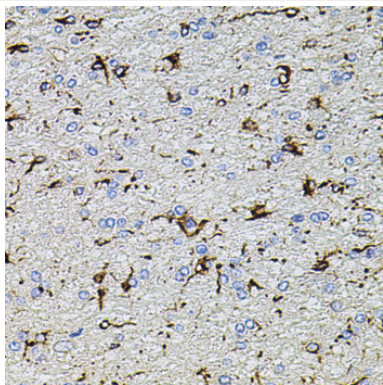
## Application Details

WB □ 1:500 - 1:2000

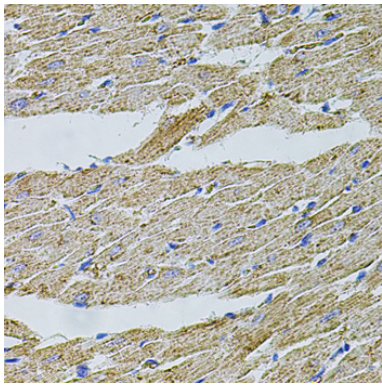
IHC □ 1:50 - 1:200

IF □ 1:50 - 1:200

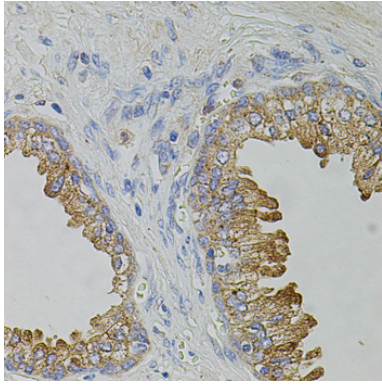
## Images



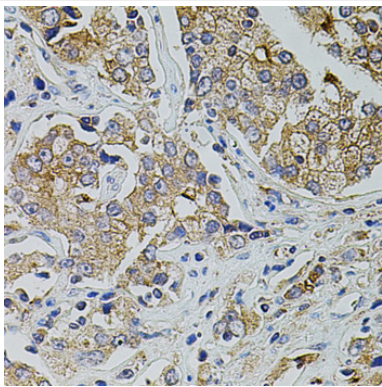
Immunohistochemistry of paraffin-embedded rat brain using TRPA1 at dilution of 1:100 (40x lens).



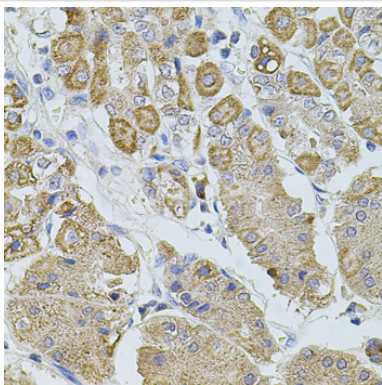
Immunohistochemistry of paraffin-embedded rat heart using TRPA1 at dilution of 1:100 (40x lens).



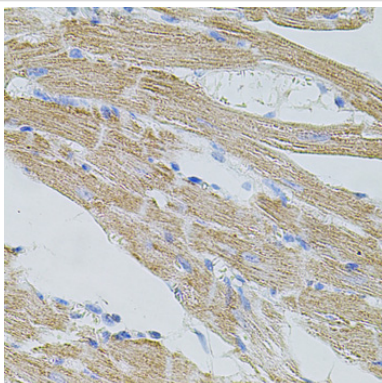
Immunohistochemistry of paraffin-embedded human prostate using TRPA1 at dilution of 1:100 (40x lens).



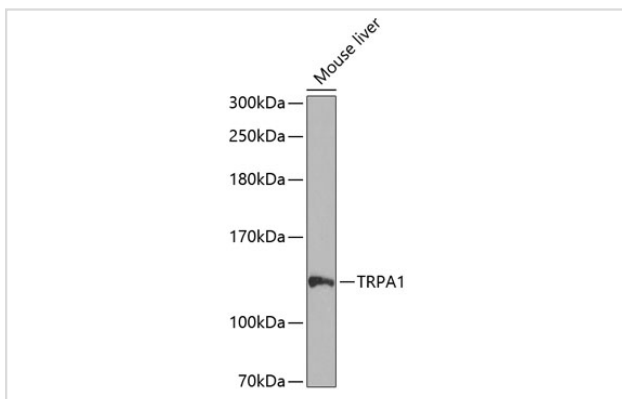
Immunohistochemistry of paraffin-embedded human prostate cancer using TRPA1 at dilution of 1:100 (40x lens).



Immunohistochemistry of paraffin-embedded human stomach using TRPA1 at dilution of 1:100 (40x lens).



Immunohistochemistry of paraffin-embedded mouse heart using TRPA1 at dilution of 1:100 (40x lens).



Western blot analysis of extracts of mouse liver, using TRPA1 at 1:1000 dilution.

## Background

The structure of the protein encoded by this gene is highly related to both the protein ankyrin and transmembrane proteins. The specific function of this protein has not yet been determined; however, studies indicate the function may involve a role in signal transduction and growth control.

Note: This product is for in vitro research use only