

## EMC10 Antibody

Catalog No: #46558

Orders: order@signalwayantibody.com

Support: tech@signalwayantibody.com

## Description

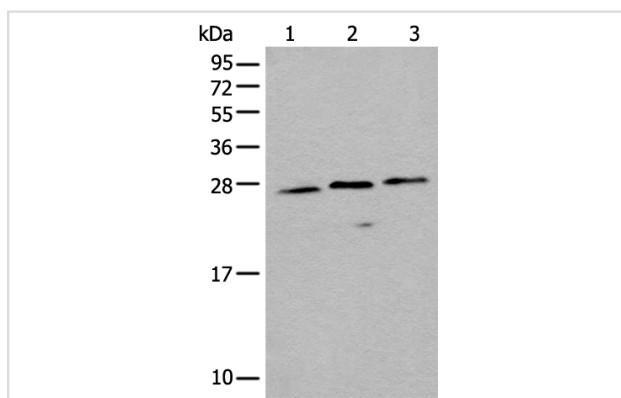
Product Name	EMC10 Antibody
Host Species	Rabbit
Clonality	Polyclonal
Purification	Antigen affinity purification
Applications	WB IHC
Species Reactivity	Hu Ms Rt
Specificity	The antibody detects endogenous levels of total EMC10 protein.
Immunogen Type	peptide
Immunogen Description	Synthetic peptide corresponding to residues near the C terminal of human EMC10
Target Name	EMC10
Other Names	HSM1; HSS1; C19orf63
Accession No.	Swiss-Prot:Q5UCC4NCBI Gene ID:284361NCBI Protein:NP_996261
Uniprot	Q5UCC4
GeneID	284361;
Calculated MW	27 kDa
Concentration	1.1mg/ml
Formulation	Rabbit IgG in pH7.4 PBS, 0.05% NaN <sub>3</sub> , 40% Glycerol.
Storage	Store at -20°C

## Application Details

Western blotting: 1:200-1:1000

Immunohistochemistry: 1: 30-150

## Images



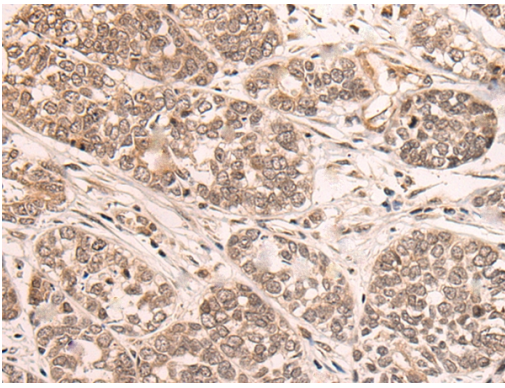
Gel: 12%SDS-PAGE

, Lysate: 40 B<sub>1</sub> g, Lane 1-3: Jurkat, PC-3 and A549 cell lysates,

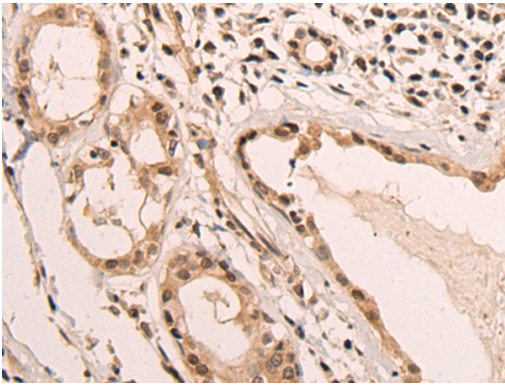
Primary antibody: 46558(EMC10 Antibody) at dilution 1/400,

Secondary antibody: Goat anti rabbit IgG at 1/8000 dilution,

Exposure time: 40 seconds



The image on the left is immunohistochemistry of paraffin-embedded Human esophagus cancer tissue using 46558(EMC10 Antibody) at dilution 1/45, on the right is treated with synthetic peptide. (Original magnification: x200)



The image on the left is immunohistochemistry of paraffin-embedded Human lung cancer tissue using 46558(EMC10 Antibody) at dilution 1/45, on the right is treated with synthetic peptide. (Original magnification: x200)

## Background

EMC10, also known as C19orf63, C19orf63 is a 262 amino acid protein that exists as two alternatively isoforms and are encoded by a gene located on human chromosome 19. Chromosome 19 consists of approximately 63 million bases and makes up over 2% of human genomic DNA. Chromosome 19 includes a diversity of interesting genes and is recognized for having the greatest gene density of the human chromosomes. It is the genetic home for a number of immunoglobulin superfamily members including the killer cell and leukocyte Ig-like receptors, a number of ICAMs, the CEACAM and PSG family, and Fc $\alpha$  receptors. Key genes for eye color and hair color also map to chromosome 19. Peutz-Jeghers syndrome, spinocerebellar ataxia type 6, the stroke disorder CADASIL, hypercholesterolemia and insulin-dependent diabetes have been linked to chromosome 19. Translocations with chromosome 19 and chromosome 14 can be seen in some lymphoproliferative disorders and typically involve the proto-oncogene BCL3.

Note: This product is for in vitro research use only